

SANSKRITI IAS DAILY CURRENT AFFAIRS

11-06-2026

Wangchhu Hydroelectric Project

 ETHRWorld.com

[Hindustan Construction Company secures Rs 127 crore Bhutan hydropower project contract](#)

Hindustan Construction Company Ltd has secured a Rs 127 crore contract for the construction of the Wangchhu Hydroelectric Project in Bhutan,...



Why in News

- **Hindustan Construction Company (HCC)** secured a contract for works related to Bhutan's **Wangchhu Hydroelectric Project**.

Project Profile

- It is a **570 MW run-of-river hydropower project** in **Chukha District, Bhutan**.
- The project is located on the **Wangchu River (Raidak River in India)**.
- The Wangchu River is a tributary of the **Brahmaputra River**.



Institutional Framework

- The project is being developed by **Wangchhu Hydroelectric Power Limited (WHPL)**.
- WHPL is a joint venture between **Adani Power Limited (APL)** and **Druk Green Power Corporation (DGPC)**.
- **DGPC** holds **51%** ownership while **APL** holds **49%**.

Technical Characteristics

- The project follows the **Build, Own, Operate, Transfer (BOOT)** model.
- It will have four turbines of **142.5 MW** each.
- The expected annual generation is approximately **2,478.93 GWh**.
- It is designed as a peaking run-of-river power station.

India–Bhutan Energy Cooperation

- It is the first project under the **May 2025 MoU** for developing **5,000 MW** hydropower capacity in Bhutan.
- The project will support Bhutan's winter electricity demand.
- Surplus electricity will be exported to India during summer months.
- It strengthens India–Bhutan strategic and energy relations.

Food Safety and Standards Authority of India (FSSAI)

DH Deccan Herald

[Why wrapping food in newspapers is dangerous: FSSAI warning and safe alternatives](#)

The Food Safety and Standards Authority of India (FSSAI) warned street vendors to stop using newspapers to sell food, citing multiple health...



Why in News

- **FSSAI** directed food businesses to stop using newspapers for packing and serving food due to health concerns.

Institutional Status

- FSSAI is a statutory body under the **Food Safety and Standards Act, 2006**.
- It functions under the **Ministry of Health and Family Welfare**.

Core Mandate

- It regulates food manufacture, storage, distribution, sale, and import.
- It ensures availability of safe and wholesome food for consumers.
- It formulates national food safety standards.

Regulatory Functions

- It oversees licensing and registration of food businesses.
- It conducts surveillance, inspections, and compliance monitoring.
- It accredits food testing laboratories across India.
- It promotes food safety management systems.

Awareness and Assessment

- It conducts consumer awareness campaigns on nutrition and hygiene.
- It releases the annual **State Food Safety Index (SFSI)** since **2019**.
- The index assesses state performance in food safety governance.

Caustic Soda

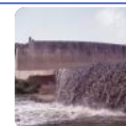
Why in News

- The **Environment (Protection) Second Amendment Rules, 2025** mandate wastewater toxicity testing for caustic soda plants using membrane-cell technology.

Down To Earth

[New rule requires fish survival test for caustic soda industry wastewater](#)

India's new environmental rules mandate a fish survival test for toxic wastewater from caustic soda plants using membrane cell technology,...



Chemical Profile

- **Caustic Soda (Sodium Hydroxide – NaOH)** is one of India's most widely used industrial chemicals.

- It is also known as **Lye, Soda Lye, and Sodium Hydrate**.
- It is produced mainly through **electrolysis of brine (NaCl solution)**.



Physical and Chemical Properties

- It is a strong **alkali** capable of neutralising acids.
- It appears as a white crystalline, odourless solid at room temperature.
- It absorbs moisture from the atmosphere due to its hygroscopic nature.
- Dissolution in water releases significant heat.
- It is highly corrosive to metals, skin, and mucous membranes.

Industrial Relevance

- It is extensively used in **soap, detergent, paper, textile, aluminium and petrochemical industries**.
- It is employed in water purification and metal processing operations.
- It is used in bleaching, electroplating and electrolytic extraction processes.

Tezpur Litchi

 News On AIR

[Assam's GI-tagged Tezpur litchi reaches international market with first export to Dubai](#)

Union Commerce and Industry Minister Piyush Goyal has said Assam's renowned GI-tagged Tezpur litchi is reaching international markets.



Why in News

- **APEDA** facilitated the first export of **GI-tagged Tezpur Litchi** from Assam to Dubai.

Geographical Identity

- **Tezpur Litchi** is one of Assam's prominent horticultural products.
- It received the **Geographical Indication (GI) Tag** in **2013**.
- It is known for high sweetness, bright-red colour and distinctive aroma.

Agricultural Characteristics

- Major varieties include **Bombaya, Bilati, Elaichi, Piyaji and Sahi**.
- Litchi belongs to the **Sapindaceae family**.
- It thrives under moist **sub-tropical climatic conditions**.

Cultivation Requirements

- Deep, well-drained loamy soil with **pH 5.0–7.0** is ideal.
- It grows best at elevations below **800 metres**.
- Temperatures above **40.5°C** and frost conditions adversely affect production.

- Excessive rainfall during flowering hampers pollination.

Production Geography

- India is the **second-largest litchi producer** after **China**.
- Major producing states include **Bihar, West Bengal, Uttar Pradesh, Jharkhand and Assam**.

Zojila Tunnel

bt Business Today

[How safe is Zojila Tunnel? From Escape tunnels to SCADA systems - know more](#)

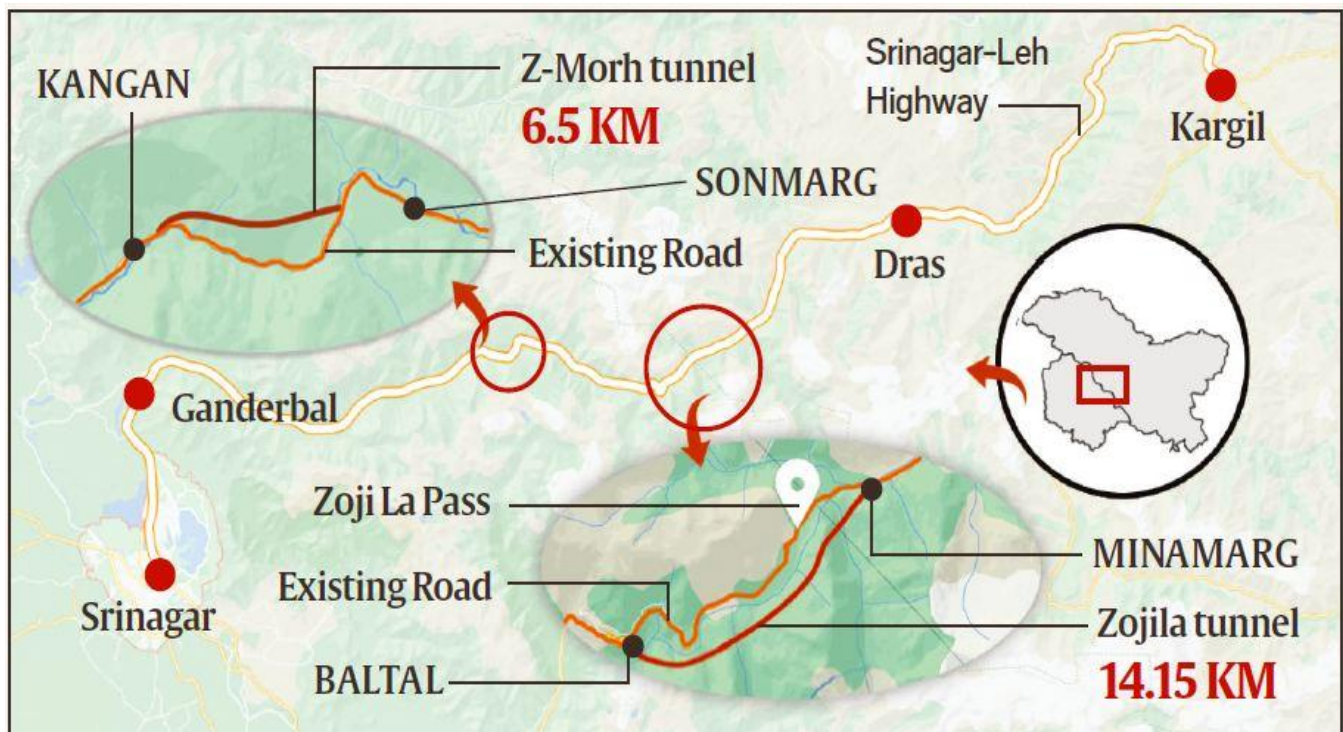


The tunnel, which connects Baltal in Kashmir with Minamarg in Ladakh, will bypass the avalanche-prone Zojila Pass and reduce travel time...

Why in News

- The **Zojila Tunnel** achieved its final breakthrough after excavation of the last section.

Strategic Infrastructure



- The tunnel connects **Sonamarg (J&K)** with **Drass (Ladakh)**.
- It is located beneath the **Zoji La Pass** on **NH-1 (Srinagar-Leh Highway)**.
- It will provide year-round connectivity between **Kashmir Valley and Ladakh**.

Engineering Features

- It is being built at an altitude of **11,578 feet**.
- The tunnel is **13 km long**, **9.5 m wide**, and **7.57 m high**.
- It is designed as a **single-tube bi-directional road tunnel**.

Technological Significance

- Construction uses the **New Austrian Tunnelling Method (NATM)**.
- NATM is particularly suitable for fragile Himalayan geological conditions.
- The project will reduce travel time from **90 minutes to approximately 15 minutes**.

Global Distinction

- It will become the **world's longest single-tube bi-directional road tunnel at the highest altitude**.

National SC-ST Hub Scheme



PIB

<https://www.pib.gov.in> > PressReleasePage

[Ministry of MSME is Promoting Inclusive Entrepreneurship ...](#)

2 days ago — **Ministry of MSME is Promoting Inclusive Entrepreneurship** through National SC-ST Hub Scheme ... Posted On: 09 JUN 2026 1:43PM by PIB Delhi. [Read more](#)

Why in News

- The **Ministry of MSME** is promoting inclusive entrepreneurship through the **National SC-ST Hub Scheme (NSSH)**.

Scheme Overview

- The scheme was launched in **October 2016**.
- It is a flagship initiative of the **Ministry of Micro, Small and Medium Enterprises**.
- It aims to strengthen entrepreneurship among **Scheduled Castes and Scheduled Tribes**.

Institutional Framework

- The scheme is implemented by the **National Small Industries Corporation (NSIC)**.
- It supports **Udyam Registration** and **GeM onboarding**.
- Assistance is provided for machinery procurement and capacity building.

Procurement and Market Access

- It promotes SC/ST participation in the mandated **4% public procurement target**.
- It facilitates vendor development programmes with **CPSEs**.
- It provides exhibition support and market linkage opportunities.

Economic Significance

- The scheme promotes inclusive growth and social empowerment.
- It strengthens the MSME ecosystem through targeted entrepreneurship support.

Dark Patterns

BS Business Standard

Dark patterns cost Indian online shoppers up to ₹28,000 cr a year: Study



A Datum Intelligence study finds hidden charges and deceptive checkout practices are eroding consumer trust and putting more than Rs 55000...

Why in News

- A recent report estimates annual consumer losses of ₹25,000–28,000 crore due to dark patterns on digital platforms.

Concept and Origin

- Dark patterns are deceptive digital design practices that manipulate user choices.
- The term was coined by **Harry Brignull** in **2010**.
- They exploit human cognitive biases to influence decisions.

Regulatory Framework

- The **Central Consumer Protection Authority (CCPA)** issued the **Guidelines for Prevention and Regulation of Dark Patterns, 2023**.
- The guidelines identify **13 prohibited dark patterns**.
- These rules strengthen consumer rights under the **Consumer Protection Act, 2019**.

Major Types

- **False Urgency** creates artificial scarcity or deadlines.
- **Basket Sneaking** adds products to carts without explicit consent.
- **Subscription Trap** makes cancellation difficult after enrolment.
- **Drip Pricing** reveals additional charges during later stages of purchase.
- **Bait and Switch** alters the promised offer after user engagement.

Governance Concerns

- Dark patterns undermine informed consumer consent.
- They reduce transparency in digital commerce.
- Effective enforcement is essential for consumer protection in the digital economy.

The Typical Dark Patterns	
False Urgency 🕒 Creating a false sense of urgency or scarcity to mislead users into taking immediate action Examples: Flash sales, limited-time offers	Basket Sneaking 🛒 Including additional items or charges in the cart without user consent Examples: Discouraged items in cart, hidden fees, donations, tips
Differential Pricing 🏷️ Using algorithms to determine pricing based on user's device or location Examples: Flight prices, quick commerce apps	Confirm Shaming 🗑️ Critiquing or attacking users to guilt them into buying Examples: Subscription prompts, Exit prompts
Interface Interference 🖱️ Manipulating user interface to mask or highlight certain specific information Examples: Extra charges, subscription fees	Subscription Traps 📄 Making deleting accounts or ending subscriptions extremely complicated or impossible Examples: Multi-step process to delete accounts
Forced Action 🖱️ Coaxing consumers into taking unwanted actions Examples: Forced signups, mobile number collection	Bait and Switch 🔄 Advertising one product or service but delivering something else, often of lower quality Examples: Fake goods, fake photos

Source: Inc42 Research

Inc42

Other Important News of the day

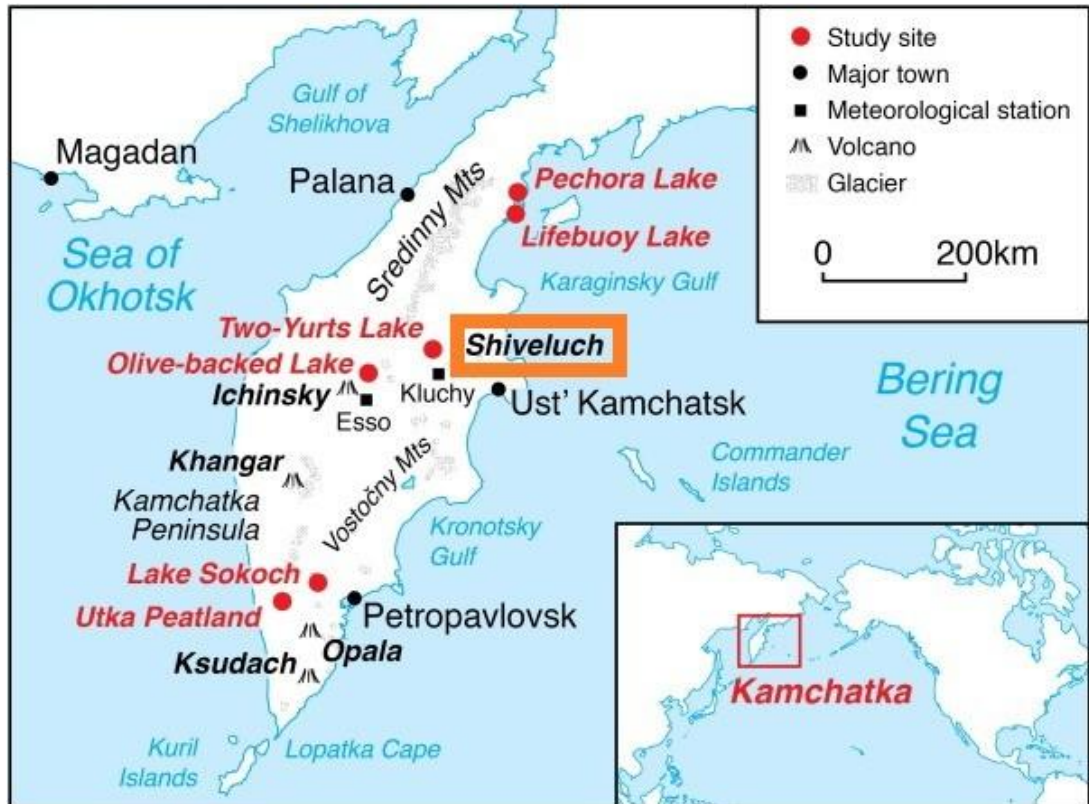
Places in News

Shiveluch Volcano

Why in News

- **Shiveluch Volcano** erupted in Russia's Far East, prompting aviation alerts.

Location and Classification



- It is located on Russia's **Kamchatka Peninsula**.
- Shiveluch is one of the region's most active volcanoes.
- It is classified as a **stratovolcano**.

Physical Characteristics

- The volcano is estimated to be **60,000–70,000 years old**.
- Its summit reaches **3,283 metres**.
- It contains a broad **9-km-wide caldera**.

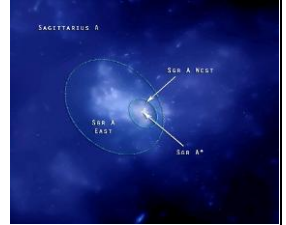
Volcanic Activity

- It has recorded around **60 major eruptions** in the last **10,000 years**.
- Continuous eruptive activity has persisted since **August 1999**.
- Dome collapses frequently generate debris avalanches and pyroclastic flows.

	<p>Important Facts</p> <ul style="list-style-type: none"> • Stratovolcanoes consist of alternating layers of lava, ash, and volcanic debris. • Kamchatka is among the world's most volcanically active regions. • Shiveluch is considered one of the most active volcanoes of the current geologic era.
Environment	<p>Gharials</p> <p>Why in News</p> <ul style="list-style-type: none"> • 31 gharial hatchlings were recently released into the Gandak River in Bihar. <p>Species Profile</p> <ul style="list-style-type: none"> • Gharial is a freshwater crocodilian belonging to the Order Crocodylia. • Its name derives from the Hindi word 'Ghara', referring to the bulbous snout of adult males. • It is among the largest living crocodilian species. <p>Distribution and Habitat</p> <ul style="list-style-type: none"> • It inhabits deep freshwater rivers with sandy banks. • Major populations occur in the Chambal, Girwa and Rapti-Narayani river systems. • Indian gharial reserves are located in Uttar Pradesh, Madhya Pradesh and Rajasthan. <p>Unique Adaptations</p> <ul style="list-style-type: none"> • It has the thinnest and longest snout among crocodilians. • Adult males possess a bulbous structure called 'Ghara' at the snout tip. • It is the most aquatic crocodilian and rarely moves far from water. • The species is predominantly piscivorous (fish-eating). <p>Conservation Status</p> <ul style="list-style-type: none"> • IUCN Red List: Critically Endangered • CITES: Appendix I • Wildlife (Protection) Act, 1972: Schedule I



Space	<p>Sagittarius A*</p> <p>Why in News</p> <ul style="list-style-type: none"> Astronomers recently detected evidence of winds emanating from Sagittarius A* after decades of research. <p>Astronomical Significance</p> <ul style="list-style-type: none"> Sagittarius A* is the supermassive black hole at the centre of the Milky Way Galaxy. It was discovered during the 1970s. It lies in the Sagittarius constellation. <p>Physical Characteristics</p> <ul style="list-style-type: none"> Its mass is approximately 4.3 million times that of the Sun. It has a diameter of about 23.5 million km. Its event horizon radius is nearly 12 million km. <p>Scientific Features</p> <ul style="list-style-type: none"> It is a strong source of radio emissions. Radio waves originate largely through the synchrotron mechanism. The emissions indicate the presence of magnetic fields and high-energy electrons. <p>Black Hole Facts</p> <ul style="list-style-type: none"> A black hole is a region where gravity prevents even light from escaping. Albert Einstein's General Theory of Relativity (1916) predicted their existence. Black holes exceeding one million solar masses are termed supermassive black holes.
Disease	<p>American Foulbrood (AFB)</p> <div style="border: 1px solid black; padding: 5px; margin-bottom: 10px;"> <p>... BBC</p> <p><u>First Scots case of bee disease AFB this year in Kincardineshire</u></p> <p>American foulbrood - caused by bacteria that infect young bee larvae - is found in Kincardineshire.</p> </div> <p>Why in News</p> <ul style="list-style-type: none"> An outbreak of American Foulbrood (AFB) was recently confirmed in Scotland.



	<p>Disease Profile</p> <ul style="list-style-type: none"> • AFB is a fatal disease affecting honey bee larvae. • It is caused by the bacterium Paenibacillus larvae. • The disease can destroy an entire colony within weeks. <p>Transmission Dynamics</p> <ul style="list-style-type: none"> • Infection occurs when larvae consume contaminated food. • Adult bees do not develop the disease but can spread spores. • Contaminated equipment and infected combs facilitate transmission. <p>Pathogen Characteristics</p> <ul style="list-style-type: none"> • The bacterium forms highly resistant spores. • Spores can remain viable for more than 50 years. • They withstand extreme temperatures and chemical exposure. <p>Management Measures</p> <ul style="list-style-type: none"> • There is currently no effective cure for AFB. • Destruction of infected colonies remains the primary control strategy. • Irradiation of infected materials is also used for containment.
--	---



Uttar Pradesh in News

UP Ground Water Scenario Improved Significantly

TH The Hindu

[U.P. advances SDG-6 goals through integrated water management efforts](#)

Uttar Pradesh enhances water management, reducing over-exploited groundwater units and promoting sustainable practices to achieve SDG-6...



Why in News

- Uttar Pradesh reported significant improvement in groundwater management, advancing progress towards **SDG-6 (Clean Water and Sanitation)**.

Groundwater Status

- Over-exploited groundwater blocks declined from **82 (2017)** to **44 (2025)**.
- The number of **Safe Blocks** increased from **540** to **563** during the same period.
- The trend reflects improved groundwater sustainability across the state.

Conservation and Monitoring Measures

- **Digital Water Level Recorders (DWLRs)** have been deployed for real-time groundwater monitoring.
- More than **3.38 lakh rainwater harvesting structures** have been created under initiatives such as **Catch the Rain**.
- Around **16,630 Amrit Sarovars** have been revived to enhance groundwater recharge.

Regulatory Framework

- The **Uttar Pradesh Ground Water Management and Regulation Act, 2019** regulates groundwater extraction.
- The Act promotes **rainwater harvesting**, sustainable water use, and industrial compliance measures.

Community Participation

- Uttar Pradesh is the only state to conduct '**Bhujal Saptah**', a week-long groundwater awareness campaign every July.
- The programme encourages public participation in water conservation efforts.

Significance

- Improved groundwater management strengthens **water security**, **agricultural sustainability**, and **climate resilience**.
- The state's integrated approach combines technology, regulation, conservation infrastructure, and community engagement.