



**Sanskritii IAS**



**DAILY  
CURRENT AFFAIRS**

**Important Current News for UPSC & UPPSC**

***13th April 2026***

**TOPICS:-**

- 1. Kalai-II Hydroelectric Project**
- 2. Punatsangchu-I Hydroelectric Project**
- 3. Windfall Tax**
- 4. Export Inspection Council (EIC)**
- 5. Lanjia Saora Tribe**
- 6. Other Important News of the day**
- 7. Uttar Pradesh in News**

**DELHI CENTRE:**  
636, Mukherjee Nagar  
New Delhi-110009

**PRAYAGRAJ CENTRE:**  
1/1/8A, Stanley Rd,  
Maharana Pratap Chauraha,  
Civil Lines, Prayagraj, UP - 211002

**☎ 9555-124-124**  
**🌐 [sanskritiiias.com](http://sanskritiiias.com)**

# KALAI-II HYDROELECTRIC PROJECT

THE Hindu

## Cabinet approves two hydro-electric projects in Arunachal Pradesh with a total outlay exceeding ₹40,000 crore

In a major boost to hydro-electric power realm in Arunachal Pradesh, the Cabinet Committee on Economic Affairs (CCEA) approved investing...



### Why in News

- The **Cabinet Committee on Economic Affairs (CCEA)** approved ₹14,105.83 crore investment for the project.

### Geographical Context

- The project is located on the **Lohit River**, a tributary of the **Brahmaputra River**, in **Anjaw district, Arunachal Pradesh**.
- The region lies in the **Eastern Himalayas**, a zone of high hydropower potential.

### Technical Features

- It is a **run-of-the-river project with pondage**, enabling limited water storage.
- The project includes a **concrete gravity dam**, diversion tunnels, and an underground powerhouse.
- It has an installed capacity of **1,200 MW** with **six 190 MW units and one 60 MW unit**.
- It is expected to generate **4,852.95 million units annually**.

### Institutional and Financial Aspects

- It will be executed by a joint venture of **THDC India Limited** and the **Government of Arunachal Pradesh**.
- The **Government of India** provides support for infrastructure and equity participation.

**Cabinet approves 1,200 MW Kalai-II Hydro Electric Project in Arunachal Pradesh**

- Expected to generate 4,852.95 MU\* of energy annually
- To strengthen power supply in the State, support in peak demand management & contribute to balancing the national grid
- To drive regional development through construction of ~29 km roads & bridges, improved infrastructure & employment opportunities

\*Million Units

#### Strategic Significance

- It enhances **energy security** and supports India's **renewable energy targets**.
- It contributes to **regional development** and infrastructure in border areas.

## PUNATSANGCHHU-I HYDROELECTRIC PROJECT

NDTV Profit

### Work Resumes On 1,200 MW Punatsangchhu-I Hydropower Project After Seven-Year Pause



Work on Bhutan's 1,200 MW Punatsangchhu-I hydropower project has resumed after a seven-year suspension, with India's Power Minister Manohar...

### Why in News

- Construction resumed after a seven-year suspension with India's participation.

### Geographical Location

- It is situated on the **Punatsangchhu River** in Bhutan, about **80 km from Thimphu**.
- The river system is part of the **Brahmaputra basin**.

### Project Characteristics

- It is a **run-of-the-river hydropower project** with **1,200 MW capacity**.
- The dam is **130 m high and 239 m long**, with six turbines of 200 MW each.

### India-Bhutan Cooperation

- It is implemented by the **Punatsangchhu Hydroelectric Project Authority (PHPA)**.
- It follows a **40% grant and 60% loan model** by the **Government of India**.
- Surplus electricity will be exported to India, strengthening bilateral ties.

### Strategic Relevance

- It deepens **India-Bhutan energy diplomacy** and supports Bhutan's economy.
- It aligns with India's **Neighbourhood First Policy**.

## WINDFALL TAX

NDTV

### Will Windfall Tax Hike On Aviation Fuel From ₹29.5 To ₹42 Per Litre Make Flying Costlier For Travellers?



Government's windfall tax hike on aviation turbine fuel (ATF) and other fuels is expected to have an impact on India's aviation sector.

### Why in News

- Government increased windfall tax on **diesel and aviation turbine fuel (ATF)** exports.

## Conceptual Framework

- It is a tax on **unexpected and above-normal profits** arising due to external factors.
- Such profits arise from **wars, pandemics, commodity shortages, or policy shifts.**

## Sectoral Application

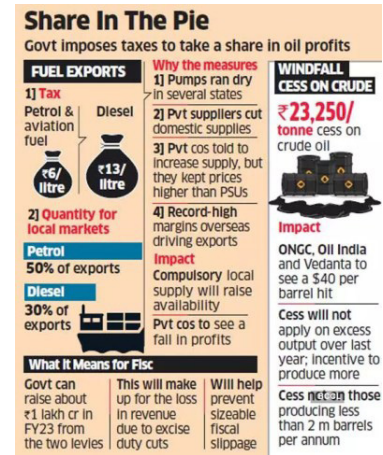
- Commonly imposed on **oil, gas, and mining sectors.**
- It may also apply to **lottery or inheritance gains.**

## Fiscal and Governance Role

- It helps in **resource redistribution for public welfare.**
- It provides an additional **revenue source for the government.**

## Economic Implications

- It may discourage excessive profiteering but can impact investor sentiment.



# EXPORT INSPECTION COUNCIL (EIC)

ET The Economic Times

## Rice export rules relaxed for select European countries

New Delhi: India on Friday said that the requirement for a certificate of inspection from Export Inspection Council (EIC)/Export Inspection...



## Why in News

- Certification requirement limited to select European countries for rice exports.

## Legal Framework

- Established under the **Export (Quality Control and Inspection) Act, 1963.**
- Functions under the **Ministry of Commerce and Industry.**



## Institutional Structure

- Headquartered in **Delhi** and led by a **Chairman.**
- Supported by **Export Inspection Agencies (EIAs)** and **NABL-accredited laboratories.**

## Core Functions

- Ensures export products meet **quality and safety standards** of importing countries.

- Provides mandatory certification for items like **fish, dairy, meat, and honey**.

### Trade Significance

- It strengthens India's **export credibility and compliance with global standards**.

## LANJIA SAORA TRIBE

TH The Hindu

### News in Frames: Traditions in transition

The Lanjia Saora community, a particularly vulnerable tribal group living in the forested regions of Rayagada and Gajapati districts in...



### Why in News

- Younger members are adapting traditions amid modern influences.

### Ethnographic Profile

- It is a **Particularly Vulnerable Tribal Group (PVTG) in Odisha**.
- They belong to the **Proto-Australoid racial group**.



### Language and Culture

- They speak the **Sora language, a Munda language**, with script **Sorang Sompeng**.
- They are known for **Idital wall paintings** and tattooing tradition **Tantangbo**.

### Socio-Economic Features

- They practice **shifting cultivation, foraging, and small-scale farming**.
- Settlements consist of **mud-and-thatch houses in hilly terrain**.

### Belief System

- They follow **animistic religion** with village deities like **Kitungsum**.
- Their rituals are closely linked with **nature, music, and dance**.

## OTHER IMPORTANT NEWS OF THE DAY

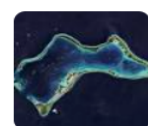
Places in News

### CHAGOS ISLANDS

B Bloomberg.com

#### How Trump Blocked UK Deal to Hand Chagos Islands to Mauritius

The UK's plan to cede ownership of the Chagos Islands to Mauritius looks to have become a casualty of Prime Minister Keir Starmer's falling...



### Why in News

- The UK paused its plan to transfer sovereignty of the islands.

### Geographical Features

- It is an archipelago in the **central Indian Ocean**, about **1,600 km south of India**.
- Major island includes **Diego Garcia**, a key strategic atoll.



### Physical Characteristics

- The islands are **low-lying**, mostly under **2 m elevation**.
- They have a **tropical marine climate** moderated by trade winds.

### Strategic Importance

- **Diego Garcia** hosts a major **US military base**, making it geopolitically significant.
- It is central to **Indo-Pacific strategic competition**.

## Environment

### INDUS RIVER DOLPHIN

Down To Earth

Angel of the Beas: How Indus River Dolphins Became Guardians of Punjab's Lifeline

Discover how the endangered Indus river dolphin, revered as the 'guardian of the Beas', was rediscovered in Punjab and is now protected...



### Why in News

- Conservation efforts are improving its survival prospects in India.

### Biological Profile

- Scientific name: **Platanista minor**.
- It is one of the **rarest freshwater mammals**.

### Unique Adaptations

- It is **functionally blind** and uses **echolocation** for navigation.
- It exhibits rare **side-swimming behaviour** among cetaceans.

### Distribution and Habitat

- Found in the **Indus River system** and a small population in the **Beas River**.

### Conservation Status

- Listed as **Endangered (IUCN Red List)**.
- Protected under **Schedule I of Wildlife Protection Act, 1972**.

### Threats and Protection

- Threatened by **pollution, poaching, and river fragmentation**.

Health

## HIB DISEASE

TN Times Now

### Deadly Hib Disease Returns as Vaccination Rates Fall in the US; Doctors Warn of Rising Child Death Risk

Hib, a once-controlled but deadly bacterial infection, is resurging in the US as childhood vaccination rates decline.

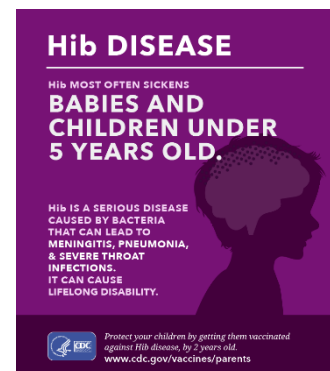


### Why in News

- Resurgence **reported in the USA** due to declining vaccination coverage.

### Disease Profile

- It is caused by **Haemophilus influenzae type b (Hib)** bacteria.
- It mainly affects children below **5 years of age**.
- It can cause severe diseases like **meningitis, bloodstream infections, and pneumonia**.



### Transmission Dynamics

- It spreads through **respiratory droplets** and prolonged close contact.
- The bacterium does not cause influenza despite its name.

### Prevention and Treatment

- Treatment involves **antibiotics**, though resistance is emerging.
- Effective **Hib vaccination** is part of immunisation programmes like **Universal Immunisation Programme (UIP)** in India.

### Public Health Significance

- Declining vaccination may reverse gains in **child mortality reduction**.

Science and Technology

## SULPHUR

NDTV

### After Oil And LPG, Supply Disruption Of This Critical Input May Hit India

Iran War Impact: The disruption around the Strait of Hormuz has led to a supply shock that can slow factory production and push up food...



### Why in News

- Supply disruptions due to West Asia conflict highlight its industrial importance.

### Chemical Properties

➤ Sulphur (atomic number 16) is a **non-metal** and the **13th most abundant element** in Earth's crust.

➤ It is a **yellow, brittle, non-conductive solid** insoluble in water.

### Occurrence in India

➤ Found in **Puga Valley (Jammu & Kashmir), Barren Island**, and parts of **Andhra Pradesh, Kerala, Himachal Pradesh**.

### Industrial Applications

- Used in manufacturing **sulphuric acid**, essential for fertilizers and refining.
- Used in **rubber vulcanisation, detergents, fungicides, and pharmaceuticals**.

### Economic Importance

➤ It is critical for **agriculture and chemical industries**, affecting food security.

**Sulfur\***

atomic number	16	[32.059, 32.076]	atomic weight
symbol	S		acid-base properties of higher-valence oxides
electron configuration	[Ne]3s <sup>2</sup> 3p <sup>4</sup>		crystal structure
name	sulfur*		physical state at 20 °C (68 °F)

Other nonmetals	Solid
Orthorhombic	Strongly acidic

\*Also spelled sulphur.  
© Encyclopædia Britannica, Inc.

## UTTAR PRADESH IN NEWS

### LASER, LIGHT & SOUND SHOW AT SMRITIKA WAR MEMORIAL, LUCKNOW



Raksha Mantri & Uttar Pradesh CM jointly inaugurate state-of-the-art Laser, Light & Sound Show at Smritika War Memorial, Lucknow Cantt

Raksha Mantri Shri Rajnath Singh and Uttar Pradesh Chief Minister Shri Yogi Adityanath jointly inaugurated a state-of-the-art Laser, Light...



#### Why in News

➤ A multimedia show was inaugurated at **Smritika War Memorial, Lucknow Cantonment** by **Rajnath Singh** and **Yogi Adityanath**.

#### Defence and Cultural Significance

➤ The show presents the **history and valour of the Indian Army** using modern technology.

➤ It promotes **patriotism and awareness of military heritage**.



### Key Features

- It is a **30-minute programme** using **laser, sound, and lighting systems**.
- It covers wars of **1947–48, 1962, 1965, 1971**, and operations like **Operation Meghdoot** and **Operation Vijay**.

### Regional Focus

- It honours **Param Vir Chakra** awardees from the **Awadh region**.

### Institutional Aspects

- Implemented by **HQ Central Command** with **UP Government** and **UPSTDC**.