



**Sanskriti IAS**



**DAILY  
CURRENT AFFAIRS**

**Important Current News for UPSC & UPPSC**

***15th April 2026***

**TOPICS:-**

- 1. Arachnids**
- 2. Baisakhi Festival**
- 3. Atlantic Meridional Overturning Circulation (AMOC)**
- 4. Bonus Issue**
- 5. Bankey Bihari Temple**
- 6. Millipede**
- 7. Konyak Tribe**
- 8. Other Important News of the day**
- 9. Uttar Pradesh in News**

**DELHI CENTRE:**  
636, Mukherjee Nagar  
New Delhi-110009

**PRAYAGRAJ CENTRE:**  
1/1/8A, Stanley Rd,  
Maharana Pratap Chauraha,  
Civil Lines, Prayagraj, UP - 211002

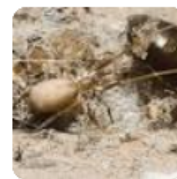
**☎ 9555-124-124**  
**🌐 [sanskritiias.com](http://sanskritiias.com)**

# ARACHNIDS

Popular Science

## New spider named for Pink Floyd devours bugs 6x its size

We can call this newly discovered spider another brick—or web—in the wall. Scientists in Colombia named the new species *Pikelinia*...



### Why in News

- A fossil harvestman discovered in Europe highlights extinct arachnid diversity using advanced imaging techniques.

### Taxonomic and Biological Classification of Archnids

- Arachnids belong to **Phylum Arthropoda** under the **chelicerate group** characterised by **jointed appendages**.
- They are **wingless, carnivorous arthropods** possessing a tough **chitinous exoskeleton**.
- The class includes orders like **spiders, scorpions, ticks, and mites** with nearly **100,000 species** identified.

#### Arachnids vs Insects

➤ Feature	➤ Arachnids	➤ Insects
➤ Classification	➤ Chelicerates (Phylum Arthropoda)	➤ Hexapods (Phylum Arthropoda)
➤ Body Segments	➤ 2 (cephalothorax + abdomen)	➤ 3 (head + thorax + abdomen)
➤ Number of Legs	➤ 8 legs	➤ 6 legs
➤ Antennae	➤ Absent	➤ Present (one pair)
➤ Wings	➤ Absent	➤ Usually present (in most species)
➤ Examples	➤ Spider, Scorpion, Tick	➤ Ant, Butterfly, Beetle

### Morphological Distinction and Adaptations

- Arachnids have **two body segments (cephalothorax and abdomen)** unlike insects which have three segments.
- They possess **eight legs**, differentiating them from insects with six legs.
- They lack jaws and instead use **specialised mouthparts and digestive enzymes** to liquefy prey.
- Respiratory structures include **book lungs and tracheal tubes** adapted for terrestrial life.

## Ecological Role and Distribution

- Arachnids are widely distributed across **all continents**, with some species adapted to **freshwater habitats**.
- They exhibit diverse lifestyles including **predatory, parasitic, and free-living behaviours**.
- Many species contribute to **pest control and ecological balance**, while some are venomous and harmful.

## BAISAKHI FESTIVAL

TOI The Times of India

[Teachers busy, govt schools skip Baisakhi events and festivities](#)

Ludhiana: Baisakhi, a festival deeply rooted in Punjab's culture and history, is celebrated annually with immense energy to mark the harvest...



### Why in News

- Baisakhi festival is being celebrated across **Punjab** with cultural and religious fervour.

### Historical and Religious Significance

- Baisakhi marks the **foundation of the Khalsa Panth in 1699** by **Guru Gobind Singh at Anandpur Sahib**.
- It is observed as the **Sikh New Year** and symbolises spiritual renewal and collective identity.

### Agricultural and Seasonal Context

- It is a **spring harvest festival** marking the **rabi crop harvesting season** in northern India.
- Farmers celebrate prosperity and express gratitude for **agricultural productivity**.

### Calendar and Regional Variations

- It falls on **April 13 or 14**, corresponding to the **Vaishakha month of the Hindu solar calendar**.

### Cultural Dimensions

- Celebrations include **Gurudwara visits, Nagar Kirtans, folk dances like Bhangra and Gidda**.
- It reinforces **community bonding and cultural identity** among Sikh and Punjabi populations.

- The festival coincides with regional New Year celebrations such as:

- Poila Boishakh (West Bengal)
- Vishu (Kerala)
- Bohag Bihu (Assam)
- Puthandu (Tamil Nadu)



# ATLANTIC MERIDIONAL OVERTURNING CIRCULATION (AMOC)

📌 Down To Earth

Atlantic current shows steady decline, with scientists warning collapse could amplify global warming and disrupt climate systems



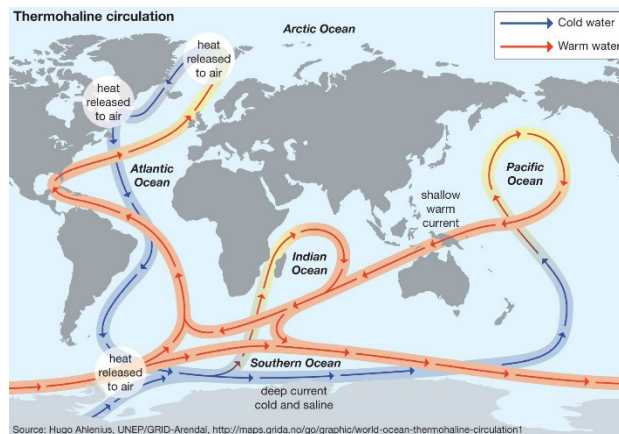
Scientists warn the Atlantic Meridional Overturning Circulation is steadily weakening and may be nearing a tipping point, risking a collapse...

## Why in News

- A study warns that collapse of **AMOC** may release large carbon reserves into the atmosphere.

## Climatic Mechanism and Structure

- AMOC is a **large system of ocean currents** forming a **global thermohaline circulation loop**.



- It transports **warm surface water northward** and **cold deep water southward**.
- Driven by **temperature and salinity differences**, affecting water density.

## Climate Regulation Role

- It is among the **16 identified climate tipping elements** influencing Earth's system stability.
- It regulates **regional climates**, especially maintaining **mild temperatures in Europe** via the **Gulf Stream**.

## Causes of Weakening

- **Global warming and greenhouse gas emissions** are major drivers.
- Melting of the **Greenland Ice Sheet** adds freshwater, reducing ocean salinity and disrupting circulation.

## Impacts and Global Linkages

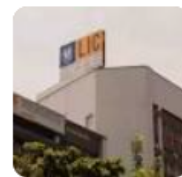
- Weakening may cause **cooling in Northern Hemisphere** and reduced rainfall in Europe.
- It can influence **El Niño patterns and global monsoon systems**, including India.

## BONUS ISSUE

ET The Economic Times

LIC shares soar 5% after first-ever 1:1 bonus issue. Here's everything you need to know

Shares of Life Insurance Corporation of India (LIC) surged as much as 5% to hit their day's high of Rs 845 on the BSE on Wednesday after the...



### Why in News

- **Life Insurance Corporation of India (LIC)** announced its first-ever bonus issue.

### Corporate Finance Concept

- A **bonus issue (scrip issue/capitalisation issue)** distributes free shares to existing shareholders.
- It is issued from **reserves or retained earnings**, not fresh capital.

### Market and Financial Implications

- It increases **share capital but not market capitalisation**.
- Share price adjusts proportionally, maintaining **total investor wealth unchanged**.
- It improves **liquidity and market perception** of the company.

### Comparison with Stock Split

- A **stock split** divides shares to reduce price and increase liquidity.
- Both maintain **market capitalisation constant**, but differ in accounting treatment.

### Taxation and Regulatory Aspects

- Bonus shares are **not taxed at issuance**, but **capital gains tax applies on sale**.
- Governed under **SEBI regulations and Companies Act, 2013**.

## BANKEY BIHARI TEMPLE

ET The Economic Times

Banke Bihari temple timings: SC makes important announcement about darshan

The Supreme Court has decided against immediate changes to religious practices at the Bankey Bihari Temple, deferring a hearing by two weeks...



### Why in News

- The **Supreme Court** declined structural intervention in religious practices at the temple.

## Religious and Cultural Significance

- Dedicated to **Lord Krishna** in **Vrindavan (Uttar Pradesh)**.
- Established by **Swami Haridas**, guru of **Tansen**.



## Architectural Features

- Built in **1864**, showcasing **Rajasthani-style architecture** with arches and pillars.
- Unique feature: absence of **bells and conch shells** in rituals.

## Historical Relevance

- Served as a centre for **freedom struggle activities**, including publication of **Bundelkhand Kesari**.

## Constitutional Dimensions

- Linked with **Article 25 and 26 (Freedom of Religion)** governing religious practices and management.

## MILLIPEDE

THE Hindu

New study reveals self-cleaning mechanism of green pill millipede in Western Ghats

A study reveals the green pill millipede's advanced self-cleaning mechanism, showcasing its unique hydrophobic exoskeleton in the Western...



## Why in News

- Study highlights **lotus-effect-like self-cleaning mechanism** in Western Ghats millipedes.

## Taxonomy and Physical Features

- Millipedes belong to **Class Diplopoda under Subphylum Myriapoda**.
- They have **segmented bodies with two pairs of legs per segment**.

## Ecological Role

- They are **detritivores**, feeding on decaying organic matter.
- Play a key role in **nutrient recycling and soil formation**.

## Habitat and Distribution

- Found in **moist microhabitats** like forest floors and leaf litter.
- Distributed across **all continents except Antarctica**.

## Defence Mechanism

- They protect themselves by **curling into coils** and sometimes releasing chemicals.

# KONYAK TRIBE

News On AIR

## Nagaland University study identifies cancer-fighting herbs of Konyak Naga tribe

A new study led by researchers from Nagaland University has identified the anti-cancer potential of a traditional herbal formulation used by...



### Why in News

- Indigenous herbal knowledge of the **Konyak tribe** shows potential anti-cancer properties.

### Geographical and Ethnographic Profile

- Found in **Mon district of Nagaland** and parts of **Arunachal Pradesh**.
- Belong to **Mongoloid ethnic group** and speak **Sino-Tibetan language family**.

### Socio-cultural Features

- Known for **facial tattoos**, symbolising social status and achievements.
- Society is **patriarchal**, with inheritance through the eldest son.

### Economic and Cultural Practices

- Skilled in **firearm making, bamboo crafts, and handicrafts**.
- Major festivals include **Aolingmonyu, Aonyimo, and Laoun-ongmo**.

### Governance and Policy Relevance

- Highlights importance of **tribal knowledge systems under biodiversity conservation frameworks**.
- Linked with **Biological Diversity Act, 2002** and protection of traditional knowledge.

## OTHER IMPORTANT NEWS OF THE DAY

Persons in  
News

### SAMRAT CHOUDHARY

#### Why in News

- **Samrat Choudhary** became the **21st Chief Minister of Bihar** on **April 15, 2026**, marking BJP's direct leadership.

#### Constitutional Provisions

- **Article 164:** Governor appoints the Chief Minister.
- **Bihar Legislative Assembly strength: 243 members.**

## Leadership Shift

- **Nitish Kumar** resigned on **April 14, 2026** after **nearly two decades in power** and moved to the **Rajya Sabha**.
- His tenure was marked by **coalition politics and shifting alliances**.



## Profile of New CM

- Samrat Choudhary was **Deputy Chief Minister** and held the **Home Department**.
- He was sworn in by **Governor Syed Ata Hasnain at Raj Bhavan, Patna**.

## Political Significance

- Marks **first BJP-led government in Bihar** (not just coalition partner).
- Reflects BJP's push to **strengthen presence in the Hindi heartland** ahead of elections.

## Places in News

## LAKE NEUCHÂTEL

### Why in News

- Over **1,000 Roman artefacts** were discovered in Lake Neuchâtel, Switzerland.

### Geographical Characteristics

- It is the **largest lake entirely within Switzerland**, located at the **foot of the Jura Mountains**.
- The lake measures about **38.3 km in length and 212.33 sq km in area**.

### Hydrological Features

- The **Thièle River enters from the southwest** and exits towards the northeast.
- Other inflowing rivers include **Areuse and Broye**.



### Geological Formation

- The lake was formed during the **last Ice Age (~15,000 years ago)** due to glacial activity.

### Archaeological and Cultural Relevance

- The site of **La Tène on its northern shore** is associated with the **Late Iron Age La Tène culture**.
- Recent discoveries provide insights into **Roman-era settlement and trade networks**.

### Environment

## CYRTODACTYLUS RAIMONAENSIS

### Why in News

- A new species of bent-toed gecko, **Cyrtodactylus raimonaensis**, has been discovered in Assam.

### Taxonomy and Identification

- It belongs to the genus **Cyrtodactylus**, one of the **largest gecko genera globally**.

- The species is named after **Raimona National Park in Kokrajhar district, Assam**.

### Morphological and Adaptive Features

- It has a **maximum snout-vent length of 71.1 mm** indicating moderate body size.
- It possesses **curved (bent) toes**, an evolutionary adaptation for gripping surfaces.
- The dorsal body has **weakly keeled and conical tubercles** aiding camouflage.

### Raimona National Park – Key Facts

- Located in Assam near the **India-Bhutan border** in the Eastern Himalayas.
- Connected with **Phibsoo Wildlife Sanctuary (Bhutan)** and **Jigme Singye Wangchuck National Park**.
- Major rivers include **Sankosh, Saralbhanga, and Pekua**.

### Habitat and Biogeographical Significance

- Found in **tropical evergreen forests**, particularly on **moss-covered rocks and tree trunks**.
- Indicates rich **biodiversity of Eastern Himalayan foothill ecosystems**.

## UTTAR PRADESH IN NEWS

### VEDIC FOREST PROJECT (VEDARANYAM), NAIMISHARANYA

◆ The Indian Express

Spiritual experience immersed in nature: A 'Vedic forest' taking shape in UP's temple town of Naimisharanya

UP govt plans a Rs 14.09 crore Vedic forest 'Vedaranyam' in Naimisharanya to boost spiritual tourism with nature, wellness zones and...



#### Why in News

- The **Uttar Pradesh government** has approved the **Vedaranyam (Vedic Forest) project** at **Naimisharanya (Sitapur district)** to promote spiritual tourism.

#### Location and Institutional Details

- The site lies about **85 km from Lucknow** in the sacred **Naimisharanya Dham** region.
- It is being executed by **Uttar Pradesh Rajkiya Nirman Nigam** under tourism infrastructure expansion.
- The project cost is **₹14.09 crore**, with **₹7.04 crore** already released.

#### Design Philosophy and Structure

- The forest is developed across **~20 acres** based on the **four Vedas — Rigveda, Yajurveda, Samaveda, Atharvaveda**.
- The layout follows **Vastu principles**, converging towards **Chakra Teerth**, the spiritual core.
- The central **Brahmasthan** acts as the focal point of the design.
- The model emphasises **nature-based, low-construction spiritual experience**.

#### Zonation and Key Features

- **Rigveda zone** focuses on natural elements with **open spaces and yoga platforms**.
- **Yajurveda zone** has **structured pathways and ritual-oriented spaces**.

- **Samaveda zone** includes **curved paths, meditation, and sound-based experiences.**
- **Atharvaveda zone** promotes **wellness through Ayurvedic and medicinal plants.**
- Additional elements include **Panchvriksha (sacred trees), Nakshatra plantation, and Ayurveda zones.**

### **Tourism and Sustainability Significance**

- The project aims to develop Naimisharanya as a **spiritual-cum-wellness tourism hub** with longer visitor stays.