



Sanskriti IAS



**DAILY
CURRENT AFFAIRS**

Important Current News for UPSC & UPPSC

16th April 2026

TOPICS:-

- 1. e-SafeHER Initiative**
- 2. Shongtong–Karchham Hydroelectric Project**
- 3. Chagas Disease**
- 4. Anusandhan National Research Foundation (ANRF)**
- 5. Other Important News of the day**
- 6. Uttar Pradesh in News**

DELHI CENTRE:
636, Mukherjee Nagar
New Delhi-110009

PRAYAGRAJ CENTRE:
1/1/8A, Stanley Rd,
Maharana Pratap Chauraha,
Civil Lines, Prayagraj, UP - 211002

☎ 9555-124-124
🌐 sanskritiias.com

E-SAFEHER INITIATIVE

PIB

e-SafeHER – a Cyber Security Awareness Training Programme to enable one million Cyber Sakhis across rural India



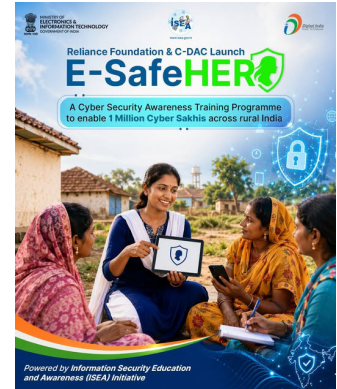
e-SafeHER – a Cyber Security Awareness Training Programme to enable one million Cyber Sakhis across rural India...

Why in News

- **C-DAC Hyderabad** and **Reliance Foundation** launched the **e-SafeHER initiative** to enhance **cybersecurity awareness among rural women**.

Institutional Framework

- Anchored under **MeitY's Information Security Education and Awareness (ISEA) programme**.
- **ISEA**, launched in **2005**, is in its **third phase (since October 2023)** focusing on cyber awareness.



Objectives and Target

- Aims to train **1 million women (Cyber Sakhis)** over **3 years**.
- Focuses on **cyber hygiene, safe digital transactions, and online fraud prevention**.

Implementation Strategy

- **C-DAC** develops training modules, while **Reliance Foundation** ensures **last-mile delivery**.
- Initially launched in **Madhya Pradesh and Odisha**, followed by **phased national expansion**.

SHONGTONG – KARCHHAM HYDROELECTRIC PROJECT

Why in News

ANI News

Himachal CM reviews progress of Shongtong-Karcham hydroelectric project, directs early completion

The Chief Minister directed the department to expedite construction and ensure completion of the first phase by January 2027,...



- The **Himachal Pradesh Chief Minister reviewed progress** of the **450 MW Shongtong–Karcham project**, highlighting its importance in **renewable energy generation**.

Project Profile

- Located in **Kinnaur district** on the **Satluj River**, developed by **Himachal Pradesh Power Corporation Limited (HPPCL)**.
- It is a **run-of-river (RoR) hydroelectric project**, minimising large-scale water storage.


Technical Specifications

- Installed capacity: **450 MW (3 × 150 MW Francis turbines)**.
- Includes **26 m high barrage, 7.7 km headrace tunnel, surge shaft, and underground powerhouse**.

Energy Significance

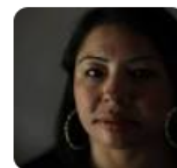
- Expected generation: **~1,579 million units annually**.
- Contributes to **clean energy targets and regional power security**.

CHAGAS DISEASE

 World Health Organization (WHO)

World Chagas Disease Day 2026

World Chagas Disease Day 2026. Women at the heart: Protecting the Next Generation from Chagas Disease. On 14 April this year, World Chagas...



Why in News

- **World Chagas Disease Day (April 14)** highlights the burden of this **neglected tropical disease (NTD)**.

Disease Profile

- Caused by protozoan **Trypanosoma cruzi**, also known as **American trypanosomiasis**.
- It causes **chronic cardiac and gastrointestinal complications**.

Transmission and Spread

- Mainly transmitted by **triatomine (kissing) bugs** via infected feces.
- Other modes include **blood transfusion, organ transplant, congenital transmission, and contaminated food**.

Prevention and Treatment

- No vaccine; prevention relies on **vector control and blood screening**.
- Early-stage treatment targets parasite elimination, while later stages require **symptomatic management**.



ANUSANDHAN NATIONAL RESEARCH FOUNDATION (ANRF)

News On AIR

ANRF developed SARAL AI to convert complex research publications into simplified social media content: Union Minister Jitendra Singh | DD News On Air



Science and Technology Minister Dr Jitendra Singh today said that the Anusandhan National Research Foundation (ANRF) is developing an...

Why in News

- ANRF is developing SARAL AI, an AI platform for simplifying scientific research communication.

Institutional Framework

- Established under the ANRF Act, 2023 under Department of Science & Technology (DST).
- Replaced Science and Engineering Research Board (SERB).



Objectives and Funding

- Promotes research, innovation, and collaboration across academia and industry.
- Target funding: ₹50,000 crore (2023–28) through multiple funding streams.

SARAL AI Platform

- Converts complex research into simple content (podcasts, videos) in 18 Indian languages.
- Enhances scientific outreach and public understanding.

OTHER IMPORTANT NEWS OF THE DAY

<p>Places in News</p>	<h3>SUDAN</h3> <p>UN Women</p> <p>Sudan's war on women: The number of people in need of sexual violence support quadruples as abuse of women and girls becomes the blueprint of war, three years on</p> <p>Sexual violence continues to surge across Sudan, with the number of women and girls requiring support after experiencing gender-based...</p> <h4>Why in News</h4> <ul style="list-style-type: none"> ➤ A UN Women report highlights rising sexual violence amid ongoing conflict in Sudan. <h4>Geographical Profile</h4> <ul style="list-style-type: none"> ➤ Located in Northeast Africa with capital Khartoum, bordering 7 countries and the Red Sea.
-----------------------	--



Physical Features

- Dominated by **plains and plateaus drained by the Nile River system.**
- Climate varies from **desert in north to tropical savannah in south.**



Resource Profile

- Rich in **petroleum, gold, and hydropower potential, influencing geopolitical dynamics.**

Environment

CALAMARIA GAROENSIS

THE HINDU

Meghalaya yields new burrowing reed snake

Researchers have identified a new burrowing snake species, Calamaria garoensis, in Meghalaya, enhancing biodiversity knowledge and...



Why in News

- Researchers identified a **new species of burrowing reed snake** in **Meghalaya’s West Garo Hills**, indicating **rich but underexplored biodiversity** of Northeast India.

Taxonomy and Distribution

- It belongs to genus **Calamaria**, widely distributed in **South and Southeast Asia.**
- The species shows **endemic and restricted distribution** to the Garo Hills region.

Morphological Features

- It has **smooth dorsal scales arranged in 13 rows** and a **short blunt tail.**
- Distinct traits include **longitudinal body stripes** and a **faint nuchal ring.**

Ecological Traits

- Reed snakes are **small, non-venomous, fossorial reptiles** inhabiting **moist forest floors and leaf litter.**
- They feed on **soft-bodied invertebrates**, contributing to **soil ecosystem balance.**

ETURNAGARAM WILDLIFE SANCTUARY

Hyderabad Mail

Flames Devour Forests in Mulugu, Wildlife Fights for Survival

Massive forest fire engulfs Eturnagaram Wildlife Sanctuary in Mulugu district, officials suspect deliberate burning linked to minor forest...



Why in News

- A **large-scale forest fire** recently affected the **Eturnagaram Wildlife Sanctuary**, raising concerns about **biodiversity loss**.

Geographical Features

- Located in **Telangana near borders with Maharashtra and Chhattisgarh**, established in **1952**.
- The **Godavari River** flows through it along with **Dayyam Vagu stream**.

Ecology and Biodiversity

- Dominated by **tropical dry deciduous forests** with **teak, bamboo, madhuca, terminalia**.
- Fauna includes **Tiger, Leopard, Gaur, Sloth Bear, Nilgai, Black Buck**.

Cultural Linkages

- Houses the **Sammakka-Saralamma Temple**, associated with a major tribal festival.

Science and Technology

WHOLE-EXOME SEQUENCING (WES)

News-Medical

Scientists use whole exome sequencing to discover a new rare genetic disease

Scientists at Sanford Burnham Prebys Medical Discovery Institute and an international team of collaborators used a genetic sequencing...



Why in News

- Scientists used **Whole-Exome Sequencing (WES)** to identify a **rare genetic disorder**, showcasing its diagnostic utility.

Scientific Concept

- WES sequences only **exons (protein-coding regions)**, which constitute **<2% of genome**.
- These regions account for **~85% of disease-causing mutations**.

Comparative Advantage

- It is more **targeted, faster, and cost-effective** than **Whole Genome Sequencing (WGS)**.
- It reduces **data complexity and improves analysis efficiency**.

Applications

- Used in **clinical diagnosis, rare disease identification, and genetic research**.

Defence

INS DHRUV

Why in News

- The **Indian Navy deployed INS Dhruv in the Arabian Sea** ahead of Pakistan’s declared missile live-firing window, highlighting India’s **real-time missile tracking and surveillance preparedness**.



Strategic and Institutional Profile

- It is India’s **first dedicated nuclear missile tracking and ocean surveillance vessel**, commissioned on **10 September 2021**.
- Built by **Hindustan Shipyard Limited** in collaboration with **DRDO** and **NTRO**, and jointly operated by these agencies with the **Indian Navy**.

Capabilities and Defence Role

- It tracks **ballistic missiles and satellites** and gathers **electronic intelligence (ELINT)**.
- It provides **early warning of missile threats** and supports **Ballistic Missile Defence (BMD)** systems.
- It can **map ocean floors**, aiding in **submarine detection and anti-submarine warfare**.
- It monitors **missile re-entry vehicles and payload signatures** for strategic analysis.

Technical Features

- Displacement of about **15,000 tonnes** with **CODAD propulsion (2 × 9000 kW engines)**.
- Maximum speed of **~21 knots**.
- Equipped with **X-band and S-band AESA radars** for long-range tracking.

UTTAR PRADESH IN NEWS

SAFE MOBILITY PROGRAM (UTTAR PRADESH)

DD News

UP govt launches 'safe mobility' initiative, over 1,000 women to get e-rickshaws in 5 districts

Taking a significant effort towards women's emancipation and empowerment, the Uttar Pradesh government has launched a one of its kind scheme titled 'Safe...



Why in News

- The **UP government launched the Safe Mobility Program (April 2026)** to promote **women's safety, mobility, and livelihood through e-rickshaw services.**



Implementation Framework

- Implemented under **UP State Rural Livelihoods Mission (UPSRLM)** with support from **Development Alternatives.**

Key Features

- Trains **SHG women as e-rickshaw drivers** to provide **safe transport for women and girls.**
- Initial rollout includes **~1,000 e-rickshaws** in districts like **Ayodhya, Gorakhpur, Varanasi, Kaushambi, Jhansi.**

Outcomes and Impact

- **119 women entrepreneurs, 629 trained, 244 licensed drivers.**
- Average income exceeds **₹3 lakh annually**, improving **financial independence and rural employment.**