



Sanskritii IAS



**DAILY
CURRENT AFFAIRS**

Important Current News for UPSC & UPPSC

28th April 2026

TOPICS:-

- 1. Kawasaki Disease**
- 2. Thrissur Pooram**
- 3. Pushkarmema curajae**
- 4. Bnei Menashe**
- 5. Abhilekh Patal Portal**
- 6. India–New Zealand FTA**
- 7. Other Important News of the day**
- 8. Uttar Pradesh in News**

DELHI CENTRE:
636, Mukherjee Nagar
New Delhi-110009

PRAYAGRAJ CENTRE:
1/1/8A, Stanley Rd,
Maharana Pratap Chauraha,
Civil Lines, Prayagraj, UP - 211002

☎ 9555-124-124
🌐 sanskritiiias.com

KAWASAKI DISEASE

M Medical Dialogues

Prednisolone in Kawasaki Disease Tied to Reduction in Coronary Lesions but Improved Clinical Outcomes:...

China: In children with newly diagnosed Kawasaki Disease, adjunctive Prednisolone did not reduce coronary artery lesions at one month...

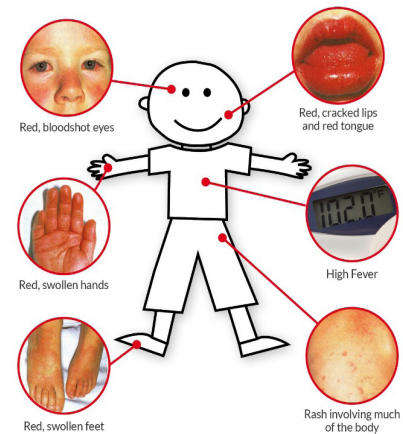


Why in News

- A recent study found that adding **prednisolone** to standard therapy does not reduce **coronary artery complications**.

Medical Profile and Epidemiology

- Kawasaki Disease is a **rare inflammatory disease affecting blood vessels**, especially in children under **5 years**.
- It is the **most common acquired heart disease in children in developed countries**.
- First identified by **Tomisaku Kawasaki (1967, Japan)**.



Pathophysiology and Symptoms

- It involves an **autoimmune response** where the immune system attacks blood vessels.
- Primarily affects **coronary arteries**, leading to potential heart complications.
- Symptoms include **prolonged fever, rash, red eyes, swollen lymph nodes, and peeling skin**.

Treatment and Healthcare Response

- Standard treatment includes **intravenous immunoglobulin (IVIG)** therapy.
- Early diagnosis ensures **minimal long-term complications**.
- It is **non-contagious**, reducing risk of outbreaks.

Public Health Significance

- Requires **early screening and pediatric awareness** in healthcare systems.

THRISSUR POORAM

TH The Hindu

Thrissur Pooram concludes with 'Upacharam Cholli Piriyaal' ritual

The 2026 edition of Thrissur Pooram concluded with the 'Upacharam Cholli Piriyaal' ritual on Monday, marking an end to the 36-hour cultural...



Why in News

- The festival was conducted with reduced scale after a **firework accident causing fatalities**.



Cultural and Historical Context

- Thrissur Pooram is a major temple festival held at **Vadakkunnathan Temple, Kerala**.
- It was initiated by **Raja Rama Varma (Sakthan Thampuran)** over **200 years ago**.
- It is known as the **"Mother of all Poorams"**.

Key Rituals and Features

- Over **50 decorated elephants** participate in processions.
- **Kudamattam** involves competitive parasol exchanges between temple groups.
- The festival includes **Panchavadyam music and Ilanjithara Melam performances**.

Cultural Significance

- Promotes **religious tourism and regional identity**.
- Way forward includes **strict safety norms and sustainable festival management practices**.

PUSHKAR MEMA CURAJAE

TOI The Times of India

New microbe discovered in Pushkar Lake could help in medicine, farming and climate solutions

Central University of Rajasthan researchers discovered new cyanobacteria *Pushkarmema curajae* in Pushkar Lake, with potential uses in...



Why in News

- Scientists discovered a new cyanobacteria species in **Pushkar Lake, Rajasthan**.

Scientific Classification and Features

- *Pushkarmema curajae* is a **cyanobacteria (prokaryotic organism)**.

- Cyanobacteria are **photosynthetic and nitrogen-fixing organisms**.
- They are among the **oldest life forms (3.5 billion years old)**.

Ecological Role

- They contribute to **oxygen production and nitrogen fixation**.
- Excess growth leads to **algal blooms and toxin production**.

Applications and Potential

- Can be used in **biofertilizers, pharmaceuticals, and nutritional supplements**.
- Offers scope for **biotechnology and sustainable agriculture innovations**.

Environmental Concerns

- Blooms degrade **water quality and harm aquatic ecosystems**.
- Way forward includes **monitoring nutrient levels and controlling pollution sources**.

BNEI MENASHE

 The Times of Israel

Group of over 250 Bnei Menashe immigrants from India lands in Israel

Newcomers are first members of the community to immigrate since government decision last year to bring around 4,600 of them to the country.



Why in News

- Israel launched **Operation Wings of Dawn** to relocate members of the community.

Ethnic and Historical Background

- Bnei Menashe are from **Mizoram and Manipur**, belonging to **Tibeto-Burman groups**.
- They claim descent from the **Biblical tribe of Manasseh**.
- Migration traces through **Persia, Afghanistan, Tibet, and China**.

Cultural Identity and Migration

- They practice **Judaism after conversion from Christianity**.
- Nearly half have migrated to **Israel and gained citizenship**.

Operation Wings of Dawn

- Aims to relocate **around 1,200 people by 2026 and 4,600 by 2030**.
- Includes **housing, Hebrew education, and integration support**.

Strategic and Diplomatic Dimensions

- Reflects **India-Israel cultural and diaspora linkages**.
- Raises issues of **identity, migration policy, and international cooperation**.

ABHILEKH PATAL PORTAL

ThePrint

National Archives of India digitises 20 crore pages—nearly 60% completed in 2 years

Papers were uploaded on Abhilekh Patal, a web portal to access the NAI's collections. Portal serves as gateway to India's historical legacy.



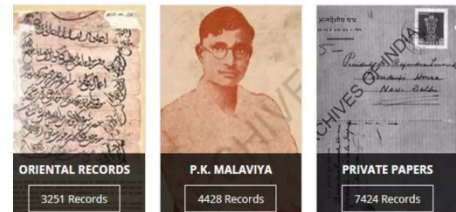
Why in News

- The Prime Minister promoted the **Abhilekh Patal portal** for historical awareness.



Institutional Framework

- Developed by **National Archives of India (NAI)** under **Ministry of Culture**.
- NAI established in **1891 as Imperial Record Department**.



Key Features of Portal

- Provides access to **7 million digitized records**.
- Includes **government files, private papers, maps, photographs, and microfilms**.

Governance and Digital Significance

- Promotes **digital governance and transparency in archival access**.
- Enhances **research and historical documentation**.

Strategic Importance

- Strengthens **cultural preservation and public engagement**.

INDIA–NEW ZEALAND FTA

India Today

India–New Zealand FTA: What's cheaper, what's protected, who benefits

India and New Zealand will sign a fast-tracked free trade agreement in New Delhi on April 27. The pact opens duty-free access, work visas,...



Why in News

- India and New Zealand are negotiating an **FTA removing tariffs on 100% exports**.

Geographical Context of New Zealand

- Located in the **South Pacific Ocean**, southeast of **Australia**.
- Comprises **North Island and South Island**, separated by **Cook Strait**.



Economic and Strategic Features

- Rich in resources like **gold, iron sands, and limestone**.
- Part of the **Pacific Ring of Fire**, prone to earthquakes and volcanism.

FTA Implications

- Enhances **trade liberalisation and export competitiveness**.
- Strengthens **India's presence in Indo-Pacific economic networks**.

Policy and Strategic Impact

- Supports **diversification of trade partners**.
- Way forward includes **balanced trade negotiations protecting domestic sectors**.

OTHER IMPORTANT NEWS OF THE DAY

Environ-
ment

BLACKBUCK

NDTV

PM Modi Praises Chhattisgarh's Blackbuck Conservation, Chief Minister Reacts

An official from the state forest department said that blackbucks had disappeared in the state by the 1970s and remained locally extinct for...



Why in News

- Population increased in **Bar-nawapara Wildlife Sanctuary (Chhattisgarh)** after reintroduction.



Biological and Habitat Features

- Blackbuck is a **medium-sized antelope native to India and Nepal**.
- Found in **grasslands, scrublands, and lightly forested areas**.
- Males have **spiral horns and dark coats**, females are lighter.

Distribution and Conservation

- Present in states like **Rajasthan, Gujarat, Madhya Pradesh, Tamil Nadu.**
- Listed as **Least Concern in IUCN Red List.**
- Protected under **Schedule I of Wildlife Protection Act, 1972.**

Ecological Importance

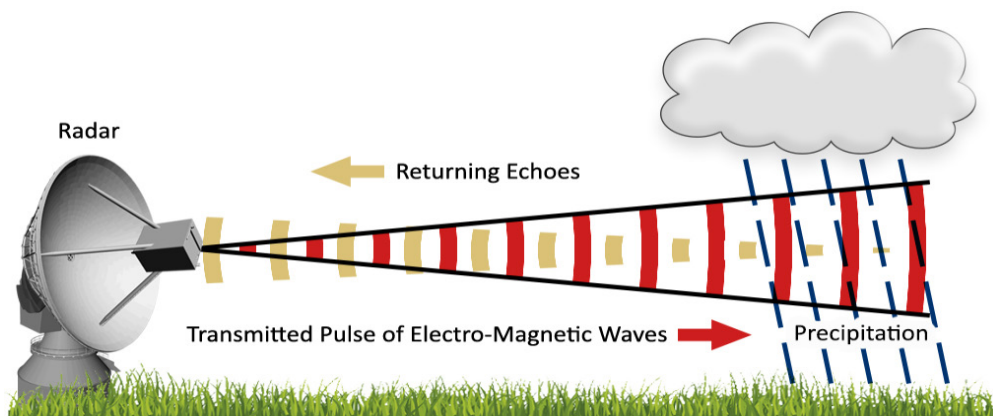
- Plays a role in **grassland ecosystem balance.**
- Indicates **habitat health and biodiversity conservation success.**

Conservation Measures

- Reintroduction programmes enhance **species recovery.**
- Way forward includes **grassland conservation and anti-poaching efforts.**

Science and Technology

DOPPLER WEATHER RADAR



Why in News

- IITM Pune installed an **X-band Doppler Weather Radar** under **Mission Mausam.**

Technology and Working Principle

- Uses the **Doppler Effect** to measure velocity and movement of objects.
- Emits **radio waves** that reflect back from atmospheric particles.
- Calculates **distance and intensity of rainfall** using signal return time.



Types and Applications

- Uses **S-band, C-band, and X-band** frequencies.
- Tracks **cyclones, thunderstorms, and rainfall patterns**.
- Covers an area of around **500 km**.

Disaster Management Role

- Improves **weather forecasting and early warning systems**.
- Supports **climate resilience and disaster preparedness**.

Strategic Importance

- Enhances **India Meteorological Department (IMD) capabilities**.

Health

LEAF SPOT DISEASES

TH The Hindu

[Leaf spot disease in arecanut: Field demonstrations on disease management to complete a year in June](#)

Field demonstrations in Karnataka aim to manage leaf spot disease in arecanut, completing one year of integrated practices this June.



Why in News

- Field demonstrations in **Karnataka arecanut plantations** are guiding farmers on managing **leaf spot diseases**.



Disease Characteristics and Causes

- Leaf spot refers to a group of plant diseases caused by **fungi, bacteria, or microorganisms**.
- Around **85% of plant diseases are fungal**, making fungi the dominant cause.
- Pathogens infect leaf surfaces and create **visible spots or lesions** that spread rapidly.
- Similar symptoms may arise due to **abiotic factors like water stress, chemical burns, or nutrient imbalance**.

Climatic and Ecological Conditions

- The disease is prevalent in **humid and wet environments**, which promote pathogen growth.
- It affects **vegetables, fruit crops, ornamental plants, and shrubs worldwide**.

- Almost all regions globally are susceptible, depending on **local climatic conditions**.

Impact on Agriculture

- Infection reduces **photosynthesis efficiency**, affecting plant growth and yield.
- Severe cases cause **yellowing, browning, and premature leaf drop**.
- It poses a threat to **food security, farm income, and agricultural sustainability**.

Defence

INS KALPENI

TOI The Times of India

[Sea diplomacy: Indian Navy ships dock in Maldives' Addu Atoll, make port call at Canary Islands](#)

India News: In a boost for sea diplomacy, an Indian Navy fast attack craft, INS Kalpeni, has arrived at Gan in the Addu Atoll,...



Why in News

- INS Kalpeni visited **Maldives (Addu Atoll)**, strengthening maritime cooperation.

Technical Specifications

- INS Kalpeni is a **Fast Attack Craft (FAC)** of the Indian Navy.
- It belongs to the **Car Nicobar-class vessels built by GRSE, Kolkata**.
- Commissioned on **14 October 2010**.

Operational Capabilities

- Equipped with **30 mm CRN-91 gun and IGLA surface-to-air missiles**.
- Performs **coastal surveillance, anti-smuggling, and search & rescue operations**.
- Based at **Kochi under Southern Naval Command**.

Strategic and Maritime Importance

- Enhances India's role in **Indian Ocean Region (IOR) security**.
- Supports **India-Maldives defence cooperation and maritime diplomacy**.

Security Implications

- Strengthens **coastal defence and anti-piracy capabilities**.

UTTAR PRADESH IN NEWS

AYODHYA–MUMBAI AMRIT BHARAT EXPRESS

TH The Hindu

PM to flag off Banaras–Pune, Ayodhya–Mumbai express trains

Prime Minister Modi to launch new Amrit Bharat Express trains linking Uttar Pradesh and Maharashtra, enhancing connectivity and passenger...



Why in News

- A new **Amrit Bharat Express** between Ayodhya Dham and Lokmanya Tilak Terminus (Mumbai) commenced its **inaugural run on 28 April 2026**.

Route and Operational Details

- The inaugural service operated as Train No. 02212, while regular service will be 22111/22112.
- It runs via **Jabalpur**, connecting **Uttar Pradesh, Madhya Pradesh, and Maharashtra**.

Stoppages and Connectivity

- The train halts at **12 stations**, enhancing regional connectivity.
- Key stations include **Sultanpur, Pratapgarh, Prayagraj, Satna, Jabalpur, Itarsi, Bhusawal, Nashik Road, Kalyan, and Thane**.
- The route links **religious centres, industrial hubs, and metropolitan regions**.

Policy and Strategic Significance

- It is part of **Indian Railways' Amrit Bharat initiative** to improve mass mobility.
- Enhances access to **Shri Ram Mandir Teerth Kshetra**, boosting pilgrimage tourism.
- Strengthens **inter-state connectivity and regional economic integration**.