



**Sanskritii IAS**



**DAILY  
CURRENT AFFAIRS**

**Important Current News for UPSC & UPPSC**

***30th April 2026***

**TOPICS:-**

- 1. Noyyal River**
- 2. Tapir**
- 3. Organisation of the Petroleum Exporting Countries (OPEC)**
- 4. Theridion himalayana**
- 5. Holocene Epoch**
- 6. Pompeii**
- 7. Atacama Desert**
- 8. Other Important News of the day**
- 9. Uttar Pradesh in News**

**DELHI CENTRE:**  
636, Mukherjee Nagar  
New Delhi-110009

**PRAYAGRAJ CENTRE:**  
1/1/8A, Stanley Rd,  
Maharana Pratap Chauraha,  
Civil Lines, Prayagraj, UP - 211002

**☎ 9555-124-124**  
**🌐 [sanskritiiias.com](http://sanskritiiias.com)**

## NOYYAL RIVER

TH The Hindu

### Farmers in Coimbatore-Tiruppur belt to intensify campaign for Noyyal river remediation by the next government

Farmers dependent on Noyyal river in the region are looking forward to accelerating their campaign for securing the commitment of the next...

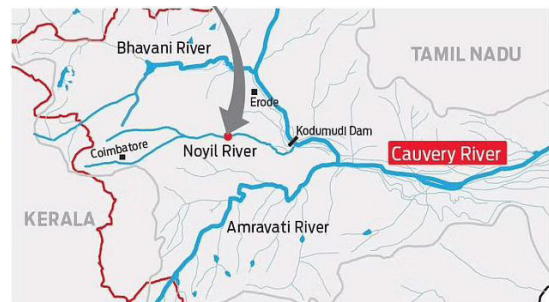


### Why in News

- Farmers demand **remediation measures** for the polluted **Noyyal River** basin.

### Geographical Profile

- The **Noyyal River** is a tributary of the **Cauvery River** flowing through **Tamil Nadu**.
- It originates from **Vellingiri Hills (Western Ghats)** and drains districts like **Coimbatore, Tiruppur, and Erode**.
- The river is about **158 km long** and is largely **seasonal with monsoon-dependent flow**.




### Hydrological Infrastructure Legacy

- The basin consists of **32 tanks, 14 canals, 23 anicuts, and 55 check dams** for water management.
- Many irrigation structures were developed by **Chola rulers**, reflecting early **water governance systems**.
- The river historically served as a **major drinking water source** for surrounding regions.

### Environmental Concerns

- Industrial effluents, especially from **textile industries**, have caused severe **water pollution**.
- Declining water quality affects **agriculture, groundwater recharge, and public health**.
- Restoration requires integrated river basin management under **environmental regulations**.

## TAPIR

 News On AIR

### World Tapir Day being observed today

(140924) -- LIMA, Sept. 24, 2014 (Xinhua) -- "Jana", a female tapir cub, feeds herself during her symbolic baptism held at Legends Park,...



### Why in News

- **World Tapir Day** observed annually on **April 27** highlights conservation awareness.

### Biological Characteristics

- Tapirs are large **herbivorous mammals** with distinctive **prehensile snouts** used for feeding.
- They are termed "**living fossils**" due to their ancient evolutionary lineage.
- They are **excellent swimmers** and prefer habitats near water bodies.


### Species Diversity and Conservation Status

- There are **four species** with varying **IUCN status** from Vulnerable to Endangered.
- **Malayan tapir** is the largest species, while **Mountain tapir** is the rarest.
- Habitat loss and hunting are major threats to their survival.

### Ecological Role

- Tapirs play a crucial role as **seed dispersers**, maintaining forest regeneration.
- They contribute to **biodiversity conservation and ecosystem stability**.

## ORGANISATION OF THE PETROLEUM EXPORTING COUNTRIES (OPEC)

 The Indian Express

### UAE exits OPEC: How the cartel dictated oil prices for decades, what this means for India

There had been murmurs for years. Yet, when the United Arab Emirates (UAE) announced its exit from the Organization of the Petroleum...



### Why in News

- **United Arab Emirates** announced exit from **OPEC and OPEC+** effective **May 1, 2026**.

## Institutional Structure

- **OPEC** is an intergovernmental organization established in **1960 (Baghdad Conference)**.
- Founding members include **Iran, Iraq, Kuwait, Saudi Arabia, and Venezuela**.
- Headquarters located in **Vienna, Austria**.



## Global Energy Governance Role

- OPEC countries hold about **75–80% of global crude oil reserves**.
- It contributes nearly **35–40% of global oil production**.
- It influences oil prices through **production quotas and supply adjustments**.

## OPEC+ Mechanism

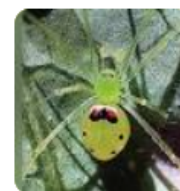
- **OPEC+ (2016)** includes **22 oil-producing nations** including non-OPEC countries like **Russia**.
- It aims to stabilize markets by **coordinating crude oil output levels**.
- It plays a key role in **global energy security and price stability**.

## THERIDION HIMALAYANA

 The New Indian Express

### Odia scientists discover new happy-face spider species

The species has been found to be polymorphic in both sexes and has 32 different morphs that exhibit patterns of a smiling face with dots in...



## Why in News

- A new spider species **Theridion himalayana** discovered in the **Western Himalayas**.

## Taxonomic and Morphological Traits

- It belongs to the **Theridiidae family**, commonly called **cobweb spiders**.
- It exhibits **polymorphism with 32 morphs** showing smiling face-like patterns.
- Color variations include **red, black, and white combinations**.

## Reproductive Biology

- It has distinct **copulatory and fertilisation ducts** aiding species identification.
- These reproductive structures are critical in **taxonomic classification of spiders**.

### Ecological Importance

- It contributes to **biological pest control** by feeding on insects like flies.
- It may assist in **pollination indirectly**, enhancing forest ecosystem functioning.

## HOLOCENE EPOCH

TOI The Times of India

### 12,000-year-old fossil site uncovered in Tamil Nadu after heavy rainfall



Science News: In the district of Thoothukudi in Tamil Nadu, India, a very interesting geological discovery has been made as a result of...

### Why in News

- Discovery of **Holocene fossil beds in Tamil Nadu** highlights geological relevance.

### Chronological Framework

- The **Holocene Epoch** began around **11,700 years ago** after the **Pleistocene Epoch**.
- It represents the **current geological epoch** recognized globally.

#### Quaternary Period with the Anthropocene Epoch

Eonothem/ Eon	Erathem/ Era	System/ Period	Series/ Epoch	Stage/ Age	millions of years ago
Phanerozoic	Cenozoic	Quaternary	Anthropocene <sup>1</sup>		1950 CE
			Holocene		0.0117
			Pleistocene	Upper	0.126
				Middle	0.781
				Calabrian	1.806
			Gelasian	2.588	

<sup>1</sup>In August 2016 the Anthropocene Working Group (AWG), a special body created within the International Commission on Stratigraphy (ICS), recommended that the Anthropocene Epoch be made a formal interval within the International Chronostratigraphic Chart. The AWG recommended that the year 1950 be used as the starting point of the Anthropocene Epoch.

© Encyclopædia Britannica, Inc.

### Climatic and Environmental Features

- Characterized by **warming climate and relative environmental stability**.
- Early Holocene saw **sea level rise (~35 metres)** due to melting glaciers.

### Anthropogenic Significance

- It marks the development of **agriculture, settled societies, and civilizations**.
- The concept of **Anthropocene** highlights increasing human impact on Earth systems.

## POMPEII

Reuters

### Archaeologists use AI to generate image of Pompeii victim

Archaeologists in Italy's Pompeii have for the first time used artificial intelligence to reconstruct the appearance of one of the victims...



### Why in News

- **AI-based reconstruction** provides new insights into victims of **79 CE eruption**.

### Historical Context

- Pompeii was an **ancient Roman city near Naples, Italy**, destroyed by **Mount Vesuvius eruption**.
- It was established by **Samnites** and later became part of the **Roman Empire**.

### Urban and Cultural Features

- The city had advanced **urban planning, drainage systems, and amphitheaters**.
- Economy was based on **agriculture, trade, and slavery-based labour**.

### Archaeological Significance

- Rediscovered in **1748**, it provides a **well-preserved record of Roman life**.
- Recognized as a **UNESCO World Heritage Site** for its historical value.

## ATACAMA DESERT



### Why in News

- **Light pollution** threatens astronomical research in the **Atacama Desert**.

### Physical Geography

- Located in **Chile**, it is the **driest desert globally**.
- It lies between the **Andes Mountains and Pacific Ocean**.

## Climatic Extremes

- Average rainfall is about **1 mm per year**, with extreme aridity.
- Temperature remains **moderate (~18°C)** despite harsh dryness.

## Economic and Scientific Importance

- Rich in **Sodium Nitrate deposits** used in fertilizers and explosives.
- Ideal for **astronomical observatories** due to clear skies and low humidity.
- Contains **Chinchorro mummies**, the oldest artificially preserved human remains.

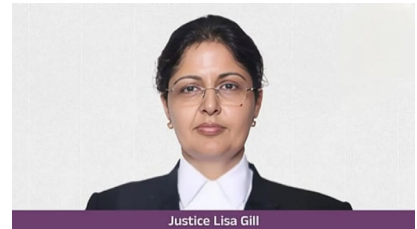
## OTHER IMPORTANT NEWS OF THE DAY

### Person in News

## JUSTICE LISA GILL AS CHIEF JUSTICE OF ANDHRA PRADESH HIGH COURT

### Why in News

- **Justice Lisa Gill** has been appointed as the first woman **Chief Justice of Andhra Pradesh High Court**.



### Constitutional Framework and Appointment

- The appointment was made by the **President under Article 217(1) of the Constitution**.
- She was recommended by the **Supreme Court Collegium** led by **Justice Surya Kant**.

### Judicial Career

- She started legal practice in **1990** and became a judge of **Punjab and Haryana High Court in 2014**.
- She was later transferred to the **Andhra Pradesh High Court**.

### Significance and Transition

- She succeeded **Justice Dhiraj Singh Thakur (retired April 2026)**.
- The appointment enhances **gender representation in the higher judiciary**.

Places in  
News

## SOMALIA

### Why in News

- Rising **piracy incidents near Somalia's coast** raise maritime security concerns.

### Geostrategic Location

- Somalia is located in the **Horn of Africa**, bordering **Gulf of Aden and Indian Ocean**.
- The region lies along **major global shipping routes**, enhancing strategic importance.

### Physical Geography

- It has an **arid to semi-arid climate** with limited rainfall and high temperatures.
- Major rivers include **Jubba and Shabelle**, which support agriculture.
- The northern region has a **coastal plain called Guban**.

### Economic and Resource Base

- Somalia has natural resources like **uranium, iron ore, copper, and bauxite**.
- Political instability affects **resource utilization and economic development**.



Environ-  
ment

## NAHARGARH WILDLIFE SANCTUARY

 The Times of India

### Raj HC overturns wildlife panel's rejection of Taj Amber clearance

Rajasthan HC overturns NBWL panel's denial of wildlife clearance for Taj Amber hotel near Nahargarh Sanctuary, citing prior approvals and...

### Why in News

- **Rajasthan High Court** intervened in wildlife clearance near sanctuary boundary.

### Location and Ecology

- Located near **Jaipur** in the **Aravalli Range**, covering about **52 sq. km.**
- It forms part of a **wildlife corridor linked to Ranthambore Tiger Reserve.**

### Biodiversity Profile


- Vegetation includes **dry deciduous forests** with species like **dhok, khejri, babool.**
- Fauna includes **leopards, sloth bears, deer, reptiles, and avifauna.**

### Conservation Infrastructure

- Contains **Nahargarh Biological Park (720 hectares)** focusing on ex-situ conservation.
- Supports conservation of species like **Bengal tiger, Asiatic lion, and sloth bear.**

## Health

### MAMMOGRAM

 The Times of India

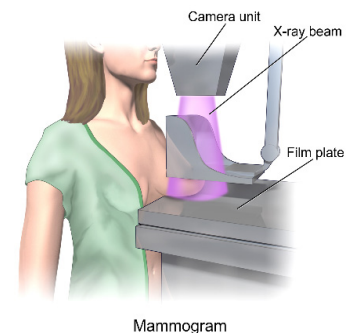
Waiting till 50? New survey warns about a dangerous mammogram myth

Wellness News: A new survey reveals that nearly half of women believe they should wait until age 50 for their first mammogram,...



### Why in News

- Recent findings show **breast arterial calcifications (BAC)** in mammograms indicate higher **cardiovascular risk.**



### Diagnostic and Screening Utility

- **Mammography** uses low-dose **X-rays** images of breast tissue.
- A **screening mammogram** helps detect early-stage **breast cancer** before clinical symptoms appear.
- A **diagnostic mammogram** is used to evaluate symptoms like **lumps, pain, nipple discharge, or skin changes.**
- It is considered the **gold standard technique** for early detection of breast abnormalities.

### Clinical Interpretation Framework


- Mammograms may indicate **normal findings, benign lesions, or suspicious abnormalities** requiring further testing.
- An abnormal result does not confirm cancer and requires **additional imaging or biopsy** for confirmation.
- Referral to a **breast specialist or oncologist** is often recommended in suspicious cases.

### Public Health Significance

- **Breast cancer** is among the leading causes of cancer-related deaths in women globally.
- Early detection through mammography significantly improves **treatment outcomes and survival rates**.
- Regular screening is recommended under **national cancer control programmes**.

## UTTAR PRADESH IN NEWS

### LITHIUM-ION BATTERY AND RARE EARTH RECYCLING FACILITY IN UTTAR PRADESH

 The Times of India

India gets a new lithium-ion battery and rare earth recycling facility in UP

India gets a new lithium-ion battery and rare earth recycling facility in UP ... Rocklink India has established an integrated recycling facility...



#### Why in News

- **Rocklink India** set up an integrated **lithium-ion battery and rare earth recycling facility** in Uttar Pradesh.

#### Location and Capacity

- The plant is located in **Sikandrabad (Bulandshahr district)**.
- It has a capacity of **10,000 tonnes/year (batteries)** and **60 tonnes/month (rare earth magnets)**.

#### Operational Features

- It processes **95 types of battery scrap**, including **pre- and post-consumer waste**.
- The plant uses indigenous **R2 recycling technology** for material recovery.

#### Policy and Environmental Relevance

- It operates under **Extended Producer Responsibility (EPR) norms**.
- It supports **critical mineral recovery, circular economy, and clean energy goals**.

