



**Sanskriti IAS**



**DAILY  
CURRENT AFFAIRS**

**Important Current News for UPSC & UPPSC**

**3rd May 2026**

**TOPICS:-**

- 1. Korowai Tribe**
- 2. Jamaica & Aarogya Maitri**
- 3. Whitley Awards**
- 4. Critical Mineral Recycling Scheme**
- 5. Leprosy**
- 6. Other Important News of the day**
- 7. Uttar Pradesh in News**

**DELHI CENTRE:**  
636, Mukherjee Nagar  
New Delhi-110009

**PRAYAGRAJ CENTRE:**  
1/1/8A, Stanley Rd,  
Maharana Pratap Chauraha,  
Civil Lines, Prayagraj, UP - 211002

**☎ 9555-124-124**  
**🌐 [sanskritiias.com](http://sanskritiias.com)**

## KOROWAI TRIBE

18 News18

### [Humans For Dinner? Inside The Remote 'Human-Eating' Tribes That The World Still Can't Stop Talking About](#)

Papua's Korowai tribe, often labelled 'cannibals', is re-examined as myths fade, revealing a misunderstood culture shaped by isolation,...



### Why in News

- The **Korowai tribe of Papua** is being re-evaluated beyond earlier stereotypes of cannibalism.

### Anthropological Features

- The Korowai are an **indigenous tribe** inhabiting southeastern **Papua in Indonesia**.
- Their estimated population ranges between **2500 and 4000 individuals**.
- They remained isolated from the outside world until the **1970s**.

### Unique Habitat Adaptation

- They construct treehouses at heights up to **40 metres** to avoid floods and threats.
- Houses are made from **wood, bark, bamboo, and sago leaves**.
- Treehouses typically last about **3 years** due to termite damage.

### Livelihood and Ecology

- The tribe follows a **hunter-gatherer economy** dependent on forest resources.
- They rely on wild plants and animals, showing deep ecological dependence.

### Cultural Misrepresentation

- Cannibalism was historically linked to **spiritual beliefs** but has largely disappeared.
- Modern media exaggerated such practices, leading to cultural misinterpretation.

## JAMAICA & AROGYA MAITRI

News On AIR

### [India deploys Aarogya Maitri healthcare infrastructure in Jamaica](#)

In a significant step towards strengthening India-Caribbean relations, India has deployed its flagship Aarogya Maitri portable healthcare...



### Why in News

- India deployed **Aarogya Maitri health infrastructure** in Jamaica under global outreach.

## Location of Jamaica

- It lies in the **Caribbean Sea** within the **Greater Antilles**.
- It is located south of **Cuba** and west of **Hispaniola**.
- Capital city is **Kingston**.



## Physical Geography

- Major mountain ranges include **Blue Mountains and John Crow Mountains**.
- Important rivers include **Rio Minho and Black River**.
- Natural resources include **bauxite, gypsum, and limestone**.

## Climate Characteristics

- It experiences a **tropical climate influenced by trade winds**.

## India's Global Health Diplomacy

- **Aarogya Maitri** is part of **BHISHM initiative** for humanitarian aid.
- Provides portable **“mini-cube” medical units** for rapid deployment.
- Strengthens India's engagement with **CARICOM nations**.

## WHITLEY AWARDS

Hindustan Times

[Indian conservationists win Whitley Awards for work on threatened wetland species | India News](#)

Indian conservationists Barkha Subba and Parveen Shaikh have won the prestigious 2026 Whitley Awards for their work in protecting the...



## Why in News

- Indian conservationists **Barkha Subba** and **Parveen Shaikh** won the **Whitley Awards 2026**.
  - Subba is working to protect the **Himalayan salamander**.
  - Shaikh leads the **“Guardians of the Skimmer”** initiative along the **Chambal River**.

## Institutional Framework

- Known as the **“Green Oscars”** for conservation excellence.
- Awarded by the **Whitley Fund for Nature (UK)** established in **1993**.
- Provides **£50,000 funding** for conservation projects.

## Species Conservation Focus

Himalayan Salamander	Indian Skimmer
<ul style="list-style-type: none"> <li>➤ It is an <b>amphibian lacking scales</b>, resembling a lizard.</li> <li>➤ Found in <b>India (Darjeeling), Nepal, and Bhutan</b>.</li> <li>➤ Exhibits <b>philopatry</b>, returning to natal sites for breeding.</li> <li>➤ Classified as <b>Vulnerable (IUCN)</b>.</li> </ul>	<ul style="list-style-type: none"> <li>➤ Belongs to genus <b>Rynchops</b> in family <b>Laridae</b>.</li> <li>➤ Found in <b>India, Bangladesh, Pakistan, Nepal, Myanmar</b>.</li> <li>➤ Key habitat includes <b>Chambal River</b>.</li> <li>➤ Classified as <b>Endangered (IUCN)</b>.</li> </ul>

## CRITICAL MINERAL RECYCLING SCHEME

News On AIR

### Ministry of Mines approves 58 companies under Incentive Scheme for Promotion of Critical Mineral Recycling

The Ministry of Mines has approved 58 companies under the Incentive Scheme for Promotion of Critical Mineral Recycling as eligible for...



### Why in News

- **Ministry of Mines** approved 58 companies under the recycling incentive scheme.

### Policy Framework

- Part of **National Critical Mineral Mission (NCMM)**.
- Scheme duration: **FY 2025-26 to FY 2030-31**.
- Total outlay is **₹1500 crore**.

### Operational Features

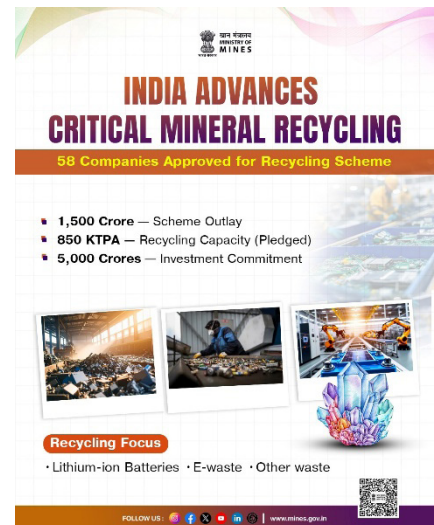
- Covers recycling from **e-waste and lithium-ion battery scrap** and applies to **new investments and expansion of existing units**.
- Focuses on **actual extraction of critical minerals**, not just intermediate processing.

### Incentive Structure

- Provides **20% capital subsidy** on plant and machinery.
- Operational subsidy linked to **incremental sales performance**.
- Incentive caps: **₹50 crore (large firms), ₹25 crore (small firms)**.

### Strategic Importance

- Reduces import dependence on **critical minerals like lithium and cobalt**.
- Supports **circular economy and energy transition goals**.



# LEPROSY

TOI The Times of India

## Delhi moves to make leprosy a notifiable disease

Delhi plans to make leprosy a notifiable disease under the Epidemic Diseases Act, requiring all providers to report cases to boost...

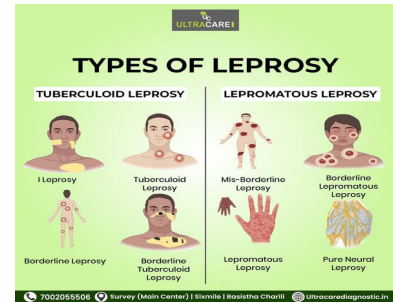


### Why in News

- Delhi declared leprosy a **notifiable disease under the Epidemic Diseases Act.**

### Disease Profile

- Also known as **Hansen's disease**, caused by **Mycobacterium leprae**.
- Affects **skin, peripheral nerves, respiratory mucosa, and eyes.**
- Classified as a **Neglected Tropical Disease (NTD).**



### Transmission Mechanism

- Spread through **respiratory droplets during prolonged contact.**
- Does not spread via casual contact like **handshakes or sharing meals.**



### Clinical Features

- Symptoms appear after **3–5 years incubation period.**
- Includes **skin lesions, nerve damage, and loss of sensation.**

### Treatment and Governance

- Treated using **Multi-Drug Therapy (MDT)** with **dapsone, rifampicin, clofazimine.**
- Mandatory reporting improves **disease surveillance and control.**

## OTHER IMPORTANT NEWS OF THE DAY

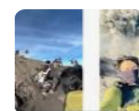
Places in News

### MOUNT DUKONO

NDTV

#### "Don't Go Down, Come Up": Indonesian Guide's Split-Second Call Saves Hikers As Mount Dukono Erupts

In volcanic terrain, especially during an active eruption, descending can actually increase the risk. - Hikers near Mount Dukono faced an...



### Why in News

- Mount Dukono recently erupted, releasing ash up to **1400 metres** above the summit.

### Geophysical Characteristics

- It is located on **Halmahera Island, North Maluku, Indonesia.**
- It is a **complex volcano** with multiple summit peaks and overlapping craters.
- The volcano stands at **1087 metres above sea level.**



### Tectonic Significance

- It lies within the **Pacific Ring of Fire**, a zone of intense seismic activity.
- Indonesia hosts about **127 active volcanoes**, indicating high volcanic risk.

### Eruption Dynamics

- Recorded eruptions began in **1933** with frequent explosive activity.
- Eruptions produce **ash plumes, lava flows, and mudflows.**

### Ecological Context

- The surrounding region hosts **tropical rainforest ecosystems** with endemic species.

## Environment

### GIRNAR WILDLIFE SANCTUARY

TOI The Times of India

[Monks seek scrapping ESZ status for Girnar sanctuary](#)

Rajkot: Ten years after it was notified as an eco-sensitive zone (ESZ), a committee of monks in Girnar, Junagadh, have demanded scrapping of...

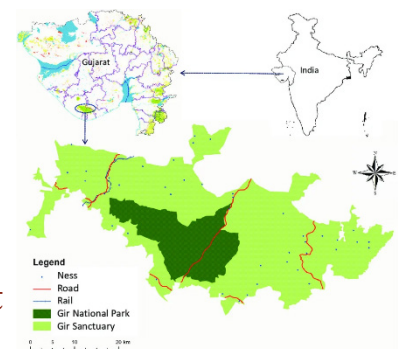


### Why in News

- Demand raised to remove **Eco-Sensitive Zone (ESZ)** status around sanctuary.

### Geographical Location

- Located in **Junagadh district, Gujarat** in the **Saurashtra region.**
- Spread across the **Girnar hills.**



### Ecological Features

- Dominated by **dry deciduous forests** with species like teak and acacia.
- Contains **grasslands, scrublands, and dense forest patches.**

### Faunal Diversity


- Hosts **Asiatic lions, leopards, chinkara, sambar, and 300 bird species.**
- Acts as an **extension habitat of Gir National Park lions.**

### Governance Conflict

- ESZ restrictions conflict with **religious activities on Girnar hills.**
- Raises issues of **environmental conservation vs cultural rights.**

## Space

### DAMPE SATELLITE

 Inshorts

[China's DAMPE satellite throws light on cosmic ray acceleration | DAMPE space telescope was launched in 2015 | Inshorts](#)

China's Dark Matter Particle Explorer DAMPE space telescope made an observation on the acceleration of cosmic rays, such as nuclei of...

### Why in News

- DAMPE observed changes in **cosmic ray intensity at high energy thresholds.**

### Scientific Profile

- Full form: **Dark Matter Particle Explorer (Wukong).**
- China's first **astronomical satellite.**
- Launched on **17 December 2015.**



### Orbital and Technical Details

- Operates in a **sun-synchronous orbit at 500 km altitude.**
- Detects **gamma rays, electrons, and cosmic rays.**

### Research Objectives

- Aims to identify **dark matter signatures.**
- Helps understand **origin and propagation of cosmic rays.**

### Data Contribution

- Recorded over **18.5 billion high-energy particle events.**

Defence

# INS MAHENDRAGIRI

Moneycontrol.com

Indian Navy gets combat edge as stealth frigate INS Mahendragiri joins fleet with advanced systems

INS Mahendragiri is the sixth P17A ship delivered to the Navy in less than 17 months since the first frigate, INS Nilgiri, was handed over...

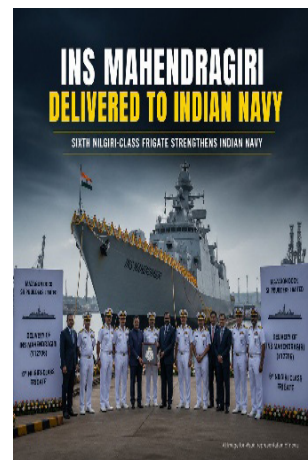


## Why in News

- INS Mahendragiri was delivered to the Indian Navy by **Mazagon Dock Shipbuilders Limited (MDSL)**.

## Strategic Defence Significance

- It is the **sixth ship of Project 17A (Nilgiri-class stealth frigates)**.
- Designed by the **Warship Design Bureau (WDB)**, reflecting indigenous capability.
- Enhances India's maritime security and blue-water navy ambitions.



## Technological Features

- Uses **Combined Diesel or Gas (CODOG)** propulsion system.
- Equipped with **Controllable Pitch Propeller (CPP)** and **Integrated Platform Management System (IPMS)**.

## Combat Capabilities

- Integrated with **BrahMos missiles, Barak-8 SAM, and MF-STAR radar**.
- Supports **anti-air, anti-surface, and anti-submarine warfare** operations.

## Project 17A Overview

- Represents advanced **stealth multi-mission frigates**.
- Other ships include **INS Nilgiri, Himgiri, Udaygiri, Taragiri, Vindhyagiri**.

## Health

## HEPATITIS

TOI The Times of India

[India among worst-hit as hepatitis deaths stay high despite global gains: WHO report](#)

India News: NEW DELHI: India remains among the countries bearing the highest burden of hepatitis-related deaths even as global efforts show...

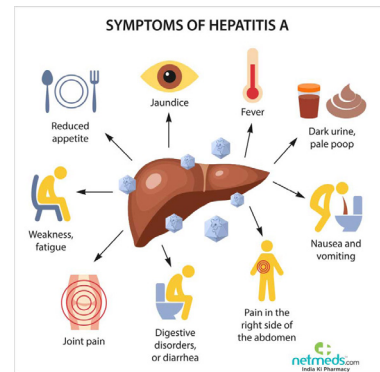


## Why in News

- **WHO Global Hepatitis Report** highlights India's high disease burden.

## Disease Classification

- Hepatitis is **inflammation of the liver** due to viral or non-viral causes.
- Major types include **Hepatitis A, B, C, D, and E**.



## Transmission Patterns

- **Hepatitis A & E** spread via contaminated water (fecal-oral route).
- **Hepatitis B & C** spread through blood and bodily fluids.

## Clinical Features

- Symptoms include **fatigue, jaundice, abdominal pain, weight loss**.

## Prevention and Treatment

- Vaccines available for **Hepatitis A, B, and D**.
- No vaccines exist for **Hepatitis C and E**.

## Public Health Significance

- Major contributor to **liver cirrhosis and cancer burden**.

## UTTAR PRADESH IN NEWS

## APEDA BASMATI-ORGANIC INTEGRATED FARM

ET The Economic Times

[Pilibhit in UP to get India's first integrated Basmati, organic training-cum-demo farm](#)

India is set to boost its Basmati rice sector. APEDA will establish a new training and demonstration farm in Pilibhit.



## Why in News

- **APEDA** signed a **70-year lease agreement** to set up India's first **integrated Basmati and organic training-cum-demonstration farm in Pilibhit, Uttar Pradesh**.

## Project Design and Location

- The farm will be developed at **Tanda Bijaisi village in Pilibhit district**.
  - It is implemented in collaboration with the **Department of Agriculture, Government of Uttar Pradesh**.
  - The long-term **70-year lease model** ensures continuity and sustained institutional support.

### About APEDA

- APEDA was established under the **Agricultural and Processed Food Products Export Development Authority Act, 1985**.
- It functions under the **Ministry of Commerce and Industry**.
- The headquarters of APEDA is located in **New Delhi**.

## Agricultural and Capacity Building

- The project integrates **Basmati rice cultivation with organic farming practices**.
- Farmers will receive **hands-on training, workshops, and exposure to advanced technologies**.
- It aims to improve **skill development and awareness of sustainable agriculture practices**.

## Economic and Export Significance

- Promotes **export-oriented Basmati production**, strengthening India's agri-exports.
- Supports **organic certification and value addition**, enhancing global competitiveness.
- Aligns with goals of **sustainable agriculture and income enhancement of farmers**.