



**Sanskriti IAS**



**DAILY  
CURRENT AFFAIRS**

**Important Current News for UPSC & UPPSC**

***5th April 2026***

**TOPICS:-**

- 1. United Nations Development Partnership Fund (UNDPF)**
- 2. Sādhana Saptah Initiative**
- 3. Yuva Sangam Programme**
- 4. Jiyo Parsi Scheme**
- 5. Project Chetak (BRO)**
- 6. Coal Gasification Incentive Scheme**
- 7. Other Important News of the day**
- 8. Uttar Pradesh in News**

**DELHI CENTRE:**  
636, Mukherjee Nagar  
New Delhi-110009

**PRAYAGRAJ CENTRE:**  
1/1/8A, Stanley Rd,  
Maharana Pratap Chauraha,  
Civil Lines, Prayagraj, UP - 211002

**☎ 9555-124-124**  
**🌐 [sanskritiias.com](http://sanskritiias.com)**

# UNITED NATIONS DEVELOPMENT PARTNERSHIP FUND (UNDPF)

 United Nations Development Programme

## Türkiye maintains its partnership with UNDP to advance Sustainable Development

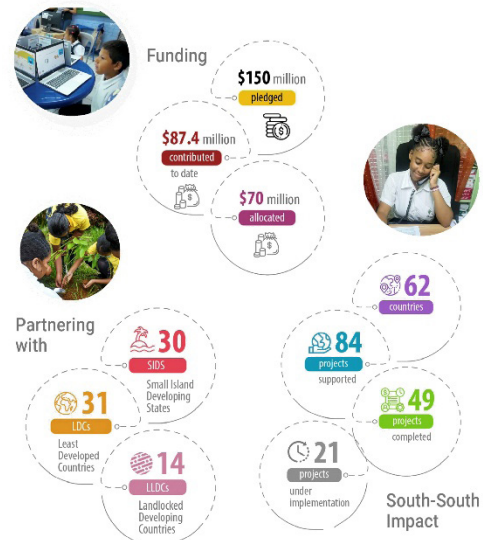
The Government of Türkiye has reaffirmed its strong partnership with the United Nations Development Programme (UNDP) through its continued...



- **Why in News:** India's Permanent Mission in New York reviewed operations of the **United Nations Development Partnership Fund** with its Board.

### Global Development Architecture

- It was established in 2017 with an initial corpus of **\$150 million led by India**.
- It supports Southern-owned, demand-driven development projects across developing countries.
- It focuses on **Least Developed Countries (LDCs)** and **Small Island Developing States (SIDS)**.



### Institutional Mechanism and Governance

- It is managed by the **United Nations Office for South-South Cooperation (UNOSSC)**.
- **UN agencies implement projects** in collaboration with partner governments.
- It represents a model of **South-South Cooperation within the UN system**.

### Thematic and SDG Linkages

- It covers **all 17 Sustainable Development Goals (SDGs)** with multi-sectoral interventions.
- It includes areas like **climate resilience, renewable energy, health, education, and livelihoods**.
- The **Commonwealth Window** supports SDG achievement in **Commonwealth nations**.

### Strategic Significance for India

- It enhances India's role as a **development partner and global South leader**.
- It strengthens India's soft power through **development diplomacy**.

## SĀDHANA SAPTAH INITIATIVE



### Sādhana Saptah 2026

Strengthening Adaptive Development and Humane Aptitude for National Advancement (Sādhana) Saptah 2026 is being organised from 2 to 8 April...



- **Why in News:** The **Sādhana Saptah 2026 initiative** was launched to strengthen future-ready civil services.

### Governance Reforms Framework

- It is part of **Mission Karmayogi (National Programme for Civil Services Capacity Building)**.
- It is implemented by **Department of Personnel and Training (DoPT), Capacity Building Commission, and Karmayogi Bharat**.



### Capacity Building Architecture

- It aims to build **citizen-centric governance competencies** among civil servants.
- It focuses on skills like **leadership, communication, data analysis, and project management**.

### Digital and Institutional Integration

- It uses the **iGOT Karmayogi platform** for curated learning modules.
- It includes **Samuhik Charcha, webinars, and hands-on training workshops**.

### Strategic Vision and Themes

- It is structured around **three Sutras: Technology, Tradition, and Tangible Outcomes**.
- It aligns with the vision of **Viksit Bharat 2047** and responsive governance.

## YUVA SANGAM PROGRAMME



### Press Note Details: Press Information Bureau

Key Takeaways. Registrations for institution-led exposure tours across paired regions under Yuva Sangam Phase-VI held from March 2 – 25,...



- **Why in News:** Registrations for **Phase VI of Yuva Sangam exposure tours** have been conducted.

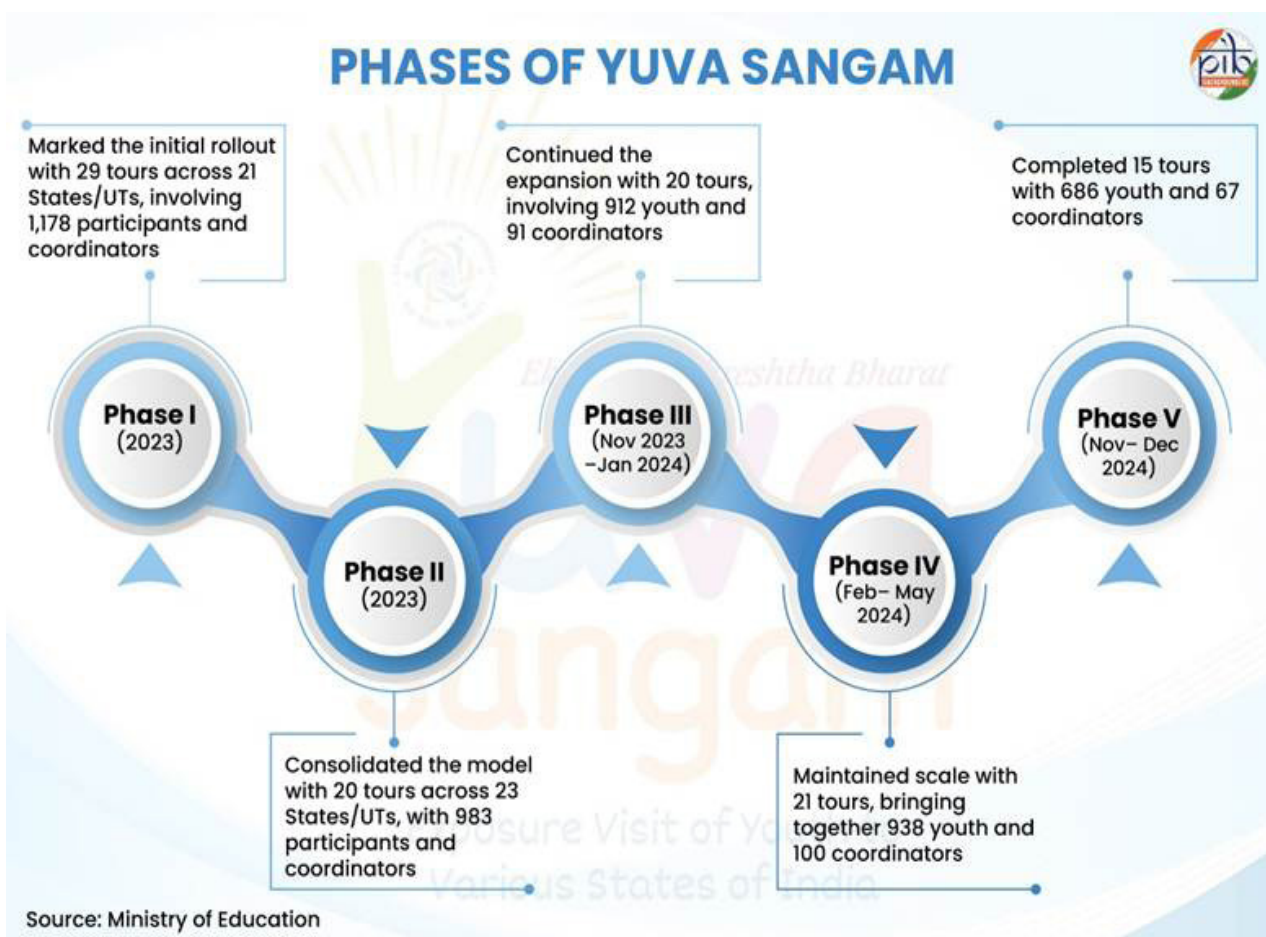
## National Integration and Social Cohesion

- It is a **youth exchange programme** under **Ek Bharat Shreshtha Bharat (EBSB)**.
- It promotes **emotional bonding and unity among youth across regions**.



## Institutional Framework

- It is anchored by the **Ministry of Education** and implemented through **Higher Education Institutions**.
- It targets youth aged **18–30 years**, including **NSS and NYKS volunteers**.



## Experiential Learning Dimensions

- It supports **National Education Policy (NEP) 2020** by promoting real-world learning.
- It builds exposure through **inter-state visits and cultural immersion**.

## Five Pillar Approach (5 Ps)

- It includes **Paryatan, Parampara, Pragati, Paraspar Sampark, and Prodyogiki**.

## JIYO PARSI SCHEME



### Universal Parsi Registration Drive Sees Enthusiastic Response in Mumbai

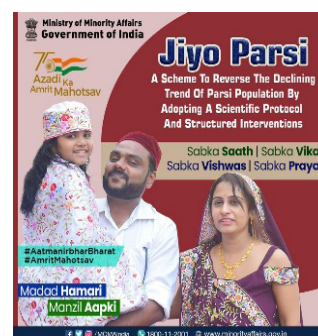
The Universal Parsi Registration Drive special facilitation camp, organised by the Ministry of Minority Affairs with support from the Bombay...



- **Why in News:** A special **Universal Parsi Registration Drive** recorded fresh enrollments under the scheme.

### Demographic Intervention Strategy

- It is a **Central Sector Scheme launched in 2013-14** to address declining **Parsi population**.
- It aims at **population stabilisation through scientific and social interventions**.



### Implementation Framework

- It is implemented by the **Ministry of Minority Affairs** with support from **State Governments and Parsi institutions**.
- Benefits are delivered through **Direct Benefit Transfer (DBT) with biometric verification**.

### Healthcare and Social Support Components

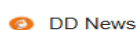
- It provides **fertility treatment and pregnancy care assistance**.
- It supports **childcare and elderly care within the community**.
- It includes **advocacy, counselling, and awareness campaigns**.

### Governance and Inclusivity Dimensions

- It reflects **Article 29 and 30 (Cultural and Educational Rights)** safeguarding minority identity.

## PROJECT CHETAK (BRO)

- **Why in News:** The **47th Raising Day of Project Chetak** was celebrated in Rajasthan.



### BRO's Project Chetak marks 47th Raising Day, highlights role in border infrastructure

Border Roads Organisation (BRO)'s Project Chetak celebrated its 47th Raising Day on Saturday in Rajasthan's Bikaner, marking over four...



## Strategic Infrastructure Significance

- It was established in **1980** in the western sector of India.
  - It supports **border connectivity in Rajasthan, Punjab, and Gujarat.**

## Operational Capabilities

- It manages over **4,000 km of roads and 214 km of ditch-cum-bund.**
- It upgrades roads to **National Highway Double Lane standards.**

### About BRO :-

- **Border Roads Organisation (BRO)** was established in **1960** under **Ministry of Defence (2015).**
- It undertakes **roads, bridges, tunnels, and airfield construction in difficult terrains.**

## Defence significance

- It facilitates **logistics support to armed forces near International Borders.**
- It enhances **national security through strategic mobility infrastructure.**

## COAL GASIFICATION INCENTIVE SCHEME

ET The Economic Times

**Kishan Reddy urges private investment in coal gasification; outlines ₹8,500Cr Cabinet plan**

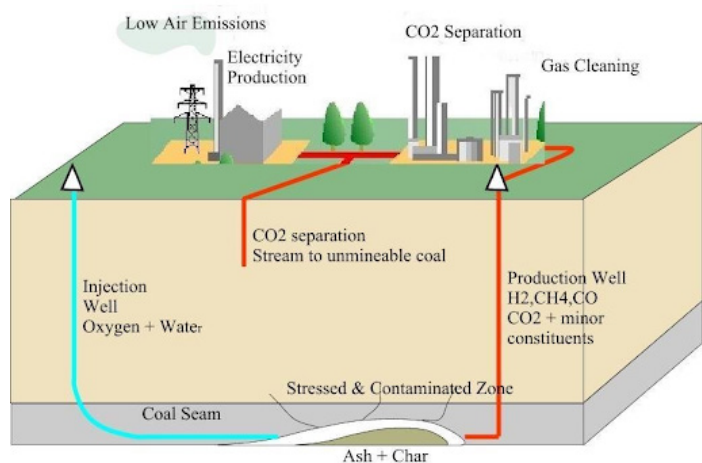
Union Minister G. Kishan Reddy unveils India's roadmap to reduce dependency on imported petroleum, ammonia, and fertilizers.



- **Why in News:** The government highlighted the **₹8,500 crore coal gasification scheme** for energy security.

## Energy Transition Strategy

- It aims to achieve **100 million tonnes of coal gasification by 2030.**
- It reduces dependence on **imported petroleum, ammonia, and fertilizers.**



## Policy and Financial Framework

- It was approved on **24 January 2024** with **₹8,500 crore outlay.**
- It promotes participation of **PSUs and private sector.**

## Technological Process

- Coal is converted into **syngas (CO, H<sub>2</sub>, CO<sub>2</sub>, CH<sub>4</sub>, H<sub>2</sub>O)** through thermo-chemical reactions.
- The process occurs at **1000–1400°C with controlled oxygen and steam.**

## Economic and Environmental Implications

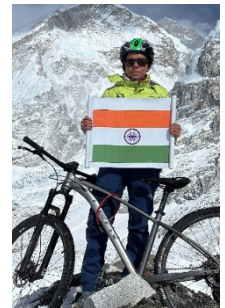
- It enhances **energy security and industrial growth.**
- It supports **clean coal transition and emission reduction strategies.**

## OTHER IMPORTANT NEWS OF THE DAY

### Person In News

### DIVYA SINGH'S EVEREST BASE CAMP CYCLING EXPEDITION

- **Why in News:** A young adventurer from Uttar Pradesh completed a **14-day cycling expedition to Everest Base Camp**, gaining national attention.



### Geographical and Scientific Context

- **Everest Base Camp (5,364 m)** is located in **Nepal**, a major hub for Himalayan expeditions.
- High altitudes have **low oxygen levels (hypoxia)**, reducing physical performance.

### UCHRAL NYAM-OSOR BECOMES PRIME MINISTER OF MONGOLIA

- **Why in News:** Mongolia's parliament appointed **Uchral Nyam-Osor as Prime Minister** amid political instability.

### Political System

- Mongolia follows a **semi-presidential system** with both **President and Prime Minister.**
- The ruling **Mongolian People's Party (MPP)** dominates national politics.



Environ-  
ment

## BENGAL FLORICAN

- **Why in News:** The **Bengal Florican population has declined to fewer than 1,000 globally.**



### Ecological Significance

- It is a **grassland indicator species** found in **alluvial grasslands.**
- It exhibits unique **lekking behaviour during courtship.**

### Distribution and Habitat

- It is found in **Uttar Pradesh, Assam, Arunachal Pradesh, Nepal, and Bangladesh.**
- Key habitats include **Dudhwa, Kaziranga, Manas, Orang, and Dibru-Saikhowa National Parks.**

### Conservation Status and Legal Protection

- It is listed as **Critically Endangered (IUCN).**
- It is protected under **Schedule I of Wildlife Protection Act, 1972.**

### Threats and Challenges

- Habitat loss due to **agriculture, encroachment, and infrastructure development** is significant.
- **Grassland burning and invasive species** further degrade habitats.

## BARNAWAPARA WILDLIFE SANCTUARY

 The Times of India

### Blackbucks Reintroduced at Barnawapara Sanctuary

Blackbucks are reintroduced into their natural habitat at Rampur grassland in Barnawapara Wildlife Sanctuary, around 100 km from...



- **Why in News:** **Blackbucks were reintroduced** into Barnawapara Wildlife Sanctuary.

### Geographical and Ecological Profile

- It is located in **Mahasamund district of Chhattisgarh** covering **245 sq km.**
- Rivers **Balamdehi and Jonk** define its boundaries and hydrology.

### Biodiversity Characteristics


- It has **tropical dry deciduous forests** dominated by **Teak, Sal, and Bamboo**.
- It hosts fauna like **tiger, leopard, gaur, sambhar, cheetal, and blackbuck**.

### Conservation and Environmental Relevance

- It supports **grassland restoration through species reintroduction**.
- It contributes to **ecosystem balance and biodiversity conservation**.

## Reports and Indices

### FAO FOOD PRICE INDEX

 Food and Agriculture Organization

FAO Food Price Index rises in March as Near East conflict raises energy costs

Pressure on fertilizer supplies and elevated energy prices add uncertainty to markets, despite a broadly comfortable global cereal supply...



- **Why in News:** The **FAO Food Price Index rose in March 2026** due to rising energy costs.

### Economic Indicator Framework

- It measures **monthly changes in global food commodity prices**.
- It includes **cereals, dairy, meat, vegetable oils, and sugar indices**.
- The base period is **2014–16**.

### Institutional Context (FAO)

- **Food and Agriculture Organization (FAO)** is a **UN specialised agency headquartered in Rome**.
- It has **195 members including the European Union**.

### Global Economic Linkages

- It reflects **food inflation trends and global supply chain disruptions**.
- It is influenced by **energy prices and geopolitical conflicts**.

Miscellaneous

## APPEMIDI MANGO (GI TAG)

DH Deccan Herald

Appemidi mango: Climate change threat to Karnataka's GI-tag fruit

Karnataka mango: Climate change is impacting appemidi, the GI-tag raw mango from Uttara Kannada, with erratic rainfall and rising...



- **Why in News:** Appemidi mango faces climate threats, prompting conservation efforts.

### Geographical Identity and Features

- It is found in Uttara Kannada and Shivamogga districts of Karnataka.
- It is known for distinct aroma, sour taste, and long shelf life.

### GI Tag and Legal Framework

- It received Geographical Indication (GI) tag in 2009.
- It is protected under Geographical Indications of Goods Act, 1999.

### Economic and Cultural Relevance

- It is widely used in the pickle industry.
- It reflects regional agro-biodiversity and cultural heritage.

## UTTAR PRADESH IN NEWS

PIB

Platinum Jubilee of PTC Saharanpur: Union Minister Shri Jyotiraditya M. Scindia releases Commemorative Postage Stamp marking 75 years of institutional excellence

Platinum Jubilee of PTC Saharanpur: Union Minister Shri Jyotiraditya M. Scindia releases Commemorative Postage Stamp marking 75 years of...



**Why in News:** The Department of Posts celebrated the 75th anniversary (Platinum Jubilee) of Postal Training Centre (PTC), Saharanpur.

### Institutional Evolution and Historical Context

- PTC Saharanpur was established on 2 April 1951 to train postal personnel.
- It has evolved into a premier training institution for Northern India.

### Governance and Capacity Building Role

- It provides structured and professional training to postal employees.
- It serves personnel across eight States and Union Territories.
- It contributes to efficient public service delivery under the postal system.

### Commemorative and Administrative Significance

- A **special commemorative postage stamp** was released to mark the occasion.
- The stamp was unveiled by **Union Minister of Communications Jyotiraditya M. Scindia** at **Akashwani Bhawan, New Delhi**.

### Strategic and Developmental Relevance

- The institution supports India's vision of becoming a **global logistics powerhouse by 2030**.
- It plays a role in **nation-building through capacity enhancement of postal services**.