



**Sanskriti IAS**



**DAILY  
CURRENT AFFAIRS**

**Important Current News for UPSC & UPPSC**

**7th April 2026**

**TOPICS:-**

- 1. Obstructive Sleep Apnea (OSA)**
- 2. India's First Fast Breeder Reactor (PFBR)**
- 3. Annual Survey of Incorporated Services Sector Enterprises (ASISSE)**
- 4. Amaravati – Capital of Andhra Pradesh**
- 5. Internet Protocols and Internet Governance**
- 6. Other Important News of the day**
- 7. Uttar Pradesh in News**

**DELHI CENTRE:**  
636, Mukherjee Nagar  
New Delhi-110009

**PRAYAGRAJ CENTRE:**  
1/1/8A, Stanley Rd,  
Maharana Pratap Chauraha,  
Civil Lines, Prayagraj, UP - 211002

**☎ 9555-124-124**  
**🌐 [sanskritiias.com](http://sanskritiias.com)**

# OBSTRUCTIVE SLEEP APNEA (OSA)

DD News

People with OSA have 71 pc higher risk of cardiovascular events, all-cause mortality: Study

Scientists have found that those living with obstructive sleep apnea (OSA) have a 71 per cent higher risk of cardiovascular events (CVEs) or...

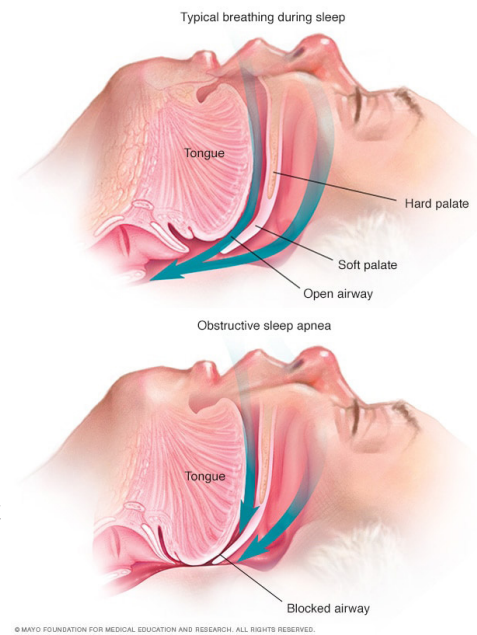


## Why in News

- Recent scientific findings show **OSA patients have 71% higher risk of cardiovascular events (CVEs).**

## Pathophysiology and Clinical Features

- **Obstructive Sleep Apnea** is a sleep disorder marked by repeated upper airway obstruction during sleep.
- Airflow cessation episodes are called **apneas**, leading to **intermittent hypoxia** and **sleep fragmentation**.
- The condition occurs due to relaxation of throat muscles blocking the airway during sleep.
- It is more prevalent among **middle-aged and elderly populations**, though it can affect all age groups.



## Health Implications and Risk Dimensions

- OSA significantly increases risk of **cardiovascular diseases, hypertension, stroke, and metabolic disorders**.
- It adversely affects **mental health**, causing fatigue, irritability, and cognitive impairment.
- Poor sleep quality reduces productivity and overall quality of life.

## Diagnosis and Symptomatology

- Common symptoms include **loud snoring, nocturnal choking, and breathing pauses during sleep**.
- Daytime sleepiness and morning headaches are frequent clinical indicators.
- Diagnosis is confirmed through **Polysomnography (Sleep Study)**, a standard diagnostic tool.

## Management and Public Health Relevance

- Lifestyle interventions include **weight management and positional therapy (avoiding supine sleeping)**.
- Medical management involves **Continuous Positive Airway Pressure (CPAP)** and oral appliances.
- Rising prevalence links OSA to **non-communicable disease (NCD) burden in India**, requiring awareness.

## INDIA'S FIRST FAST BREEDER REACTOR (PFBR)

DD News

Prototype Fast Breeder Reactor (PFBR) at Kalpakkam achieves first criticality: What it means for India's nuclear energy plans



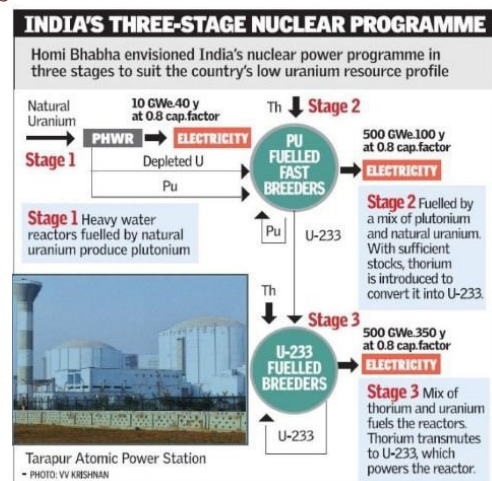
India's 500 MWe Prototype Fast Breeder Reactor (PFBR) at Kalpakkam in Tamil Nadu achieved first criticality on April 6, marking an important...

### Why in News

- India's **500 MWe Prototype Fast Breeder Reactor (PFBR) at Kalpakkam** achieved **criticality**, marking a major nuclear milestone.

### Technological Mechanism and Nuclear Physics

- A **Fast Breeder Reactor (FBR)** produces more fissile fuel than it consumes using **fast neutrons**.
- It uses **Uranium-Plutonium Mixed Oxide (MOX) fuel** for sustained nuclear reactions.
- **Liquid Sodium coolant** is used as it does not slow neutrons, enabling fast reactions.
- Surrounding blanket of **Uranium-238 converts into Plutonium-239** through neutron capture.



### Strategic Energy Significance

- PFBR marks the start of the **Second Stage of India's Three-Stage Nuclear Programme**.
- It aims to utilise India's vast **Thorium-232 reserves** in the future third stage.
- Enhances **energy security** by extracting higher energy from limited uranium resources.

## Institutional and Technological Features

- Developed by **Bharatiya Nabhikiya Vidyut Nigam Ltd (BHAVINI)** under **DAE**.
- Incorporates **passive safety systems** for automatic shutdown during emergencies.
- Achieves higher **thermal efficiency** compared to conventional reactors.

## Policy and Developmental Implications

- Criticality validates reactor design, fuel configuration, and engineering accuracy.
- Strengthens India's position in **advanced nuclear technology and clean energy transition**.
- Supports commitments under **climate goals and low-carbon energy mix**.

# ANNUAL SURVEY OF INCORPORATED SERVICES SECTOR ENTERPRISES (ASISSE)

DD News

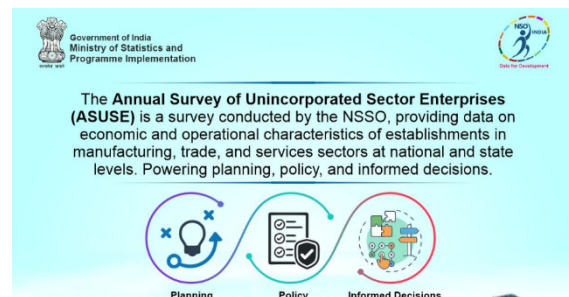
Government launches first-ever survey of incorporated services sector to strengthen data-driven policymaking

The National Statistics Office (NSO), under the Ministry of Statistics and Programme Implementation (MoSPI), has launched the first-ever...



## Why in News

- **National Statistical Office (NSO)** launched the first-ever **ASISSE (2024–25)** to capture formal services sector data.



## Statistical Framework and Coverage

- Covers **registered companies under Companies Act, 2013 and LLPs**.
- Includes sectors like **trade, transport, IT, health, education, hospitality**.
- Uses **GSTN database** as the sampling frame for enterprise identification.

## Economic Relevance and Data Gap Bridging

- Services sector contributes over **50% of India's GDP**, yet lacked granular annual data.
- Complements **Annual Survey of Industries (ASI)** and **ASUSE** for full economic mapping.
- Provides insights into **formalisation, productivity, and employment trends**.

## Governance and Legal Framework

- Conducted under **Collection of Statistics Act, 2008** and **Jan Vishwas Act, 2023**.
- Data collected through **secure digital portal**, ensuring efficiency and accuracy.
- Covers around **21 lakh enterprises**, making it one of the largest surveys.

## AMARAVATI – CAPITAL OF ANDHRA PRADESH

ThePrint

### Andhra CM thanks President for giving assent to bill recognising Amaravati as capital

Amaravati, April 7 (PTI) Andhra Pradesh Chief Minister N Chandrababu Naidu has thanked President Droupadi Murmu for giving assent to the...



## Why in News

- President approved **Andhra Pradesh Reorganisation (Amendment) Act, 2026**, declaring **Amaravati as sole capital**.

## Geographical and Urban Profile

- Located on the **southern bank of Krishna River in Guntur district**.
- Planned as a **Greenfield “People’s Capital”** between Vijayawada and Guntur.
- Designed for integrated **administrative, legislative, and judicial functions**.

## Historical and Cultural Legacy

- Ancient capital of **Satavahana Dynasty (2nd BCE–3rd CE)**.
- Major **Buddhist centre**, known for **Amaravati Stupa and Amaravati School of Art**.
- Mentioned by Chinese traveller **Xuanzang (7th century CE)**.

## Constitutional and Political Dimensions

- Emerged after bifurcation under **Andhra Pradesh Reorganisation Act, 2014**.
- 2026 amendment resolves earlier **three-capital controversy**.
- Ensures **centralisation of governance institutions**, improving administrative efficiency.

## Economic and Strategic Significance

- Envisioned as hub for **IT, pharmaceuticals, and blue economy sectors**.
- Strategic riverine location supports **infrastructure and connectivity development**.
- Symbolises revival of **regional identity and planned urbanisation model**.

# INTERNET PROTOCOLS AND INTERNET GOVERNANCE



The Hindu

<https://www.thehindu.com> > Sci-Tech > Technology

## Understanding India's internet censorship regime

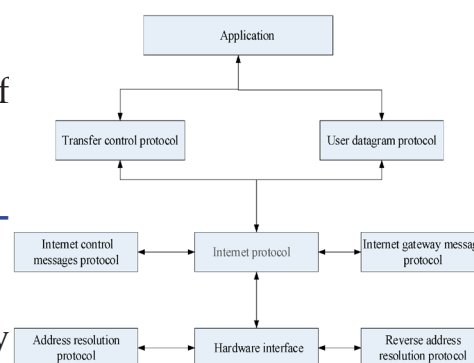
15 hours ago — Protocols and implementation. The Internet is made up of protocols like the Hypertext Transfer Protocol (HTTP), Transport Layer Security (TLS) ... [Read more](#)

### Why in News

- Study revealed **inconsistent internet censorship across Indian ISPs**, highlighting governance gaps.

### Technical Architecture of Internet Protocols

- **Internet Protocol (IP)** governs transmission of data packets across networks.
- Data is broken into packets with **source and destination IP addresses**.
- Routers ensure efficient routing and reassembly at the destination.



### Key Protocols and Functional Roles

- **DNS (Domain Name System)** converts domain names into IP addresses.
- **HTTP/HTTPS** enables web communication, with HTTPS ensuring encryption.
- **TLS (Transport Layer Security)** provides authentication and data security.
- **TCP (Transmission Control Protocol)** ensures reliable and ordered delivery.

### Legal Framework for Internet Regulation

- **Section 69A of IT Act, 2000** allows government to block online content.
- **Section 79 of IT Act** defines intermediary liability and compliance obligations.
- ISPs operate under **licensing agreements** mandating adherence to blocking orders.

### Censorship Mechanisms and Challenges

- Methods include **DNS poisoning, URL filtering, and Deep Packet Inspection (DPI)**.
- Lack of uniform implementation creates **opacity and inconsistency**.
- Raises concerns on **freedom of speech (Article 19(1)(a)) vs reasonable restrictions (Article 19(2))**.

## OTHER IMPORTANT NEWS OF THE DAY

**Places In News**

### BAHRAIN

#### Why in News

- Bahrain led **UNSC Resolution 2817** addressing Iran's actions in **Strait of Hormuz conflict (2026)**.

#### Geographical Location and Physical Features

- Island nation in **Persian Gulf**, between **Qatar and Saudi Arabia**.
- Capital: **Manama**, a major financial hub.
- Comprises **84 islands**, with Bahrain Island as the largest.



#### Strategic and Geopolitical Importance

- Hosts **U.S. Navy's 5th Fleet**, critical for Middle East maritime security.
- Located near **Strait of Hormuz**, through which ~20% of global oil passes.
- Plays key role in **global energy security and sea lane stability**.

#### Economic and Resource Profile

- Economy based on **oil, banking, and Islamic finance**.
- Known as **"Zurich of the Middle East"** for financial services.
- Contains **Dukhan oil field** as primary hydrocarbon resource.

#### Regional Connectivity and Diplomacy

- Connected to Saudi Arabia via **King Fahd Causeway (25 km)**.
- Member of **Gulf Cooperation Council (GCC)**.
- Active diplomatic role in **West Asian geopolitics and security architecture**.

Environ-  
ment

## UDANTI-SITANADI TIGER RESERVE (USTR)

### Why in News

- A rare **Indian Giant Flying Squirrel** (Western Ghats species) was recorded in the reserve.

### Geographical and Ecological Profile

- Located in **Chhattisgarh**, formed by merging **Udanti and Sitanadi Wildlife Sanctuaries**.
- The reserve lies within the **Mahanadi river basin**, with tributaries like **Udanti, Sitanadi, Indravati, and Pairi**.



- It connects forest corridors to **Indravati Tiger Reserve**, enhancing landscape-level conservation.

### Biodiversity and Conservation Significance

- Dominant vegetation includes **tropical dry and moist deciduous forests**.
- Key flora includes **Sal (Shorea robusta), Teak (Tectona grandis), Bamboo, Tendu, Mahua**.
- It hosts endangered fauna like **Wild Buffalo (Schedule I species), Tiger, Leopard, Sloth Bear, Indian Wolf**.

### Topographical Features and Habitat Structure

- The reserve contains **19 hills**, with **Deo Dongri** as the highest peak.
- Terrain supports diverse habitats including dense forests, riverine ecosystems, and grasslands.

Health

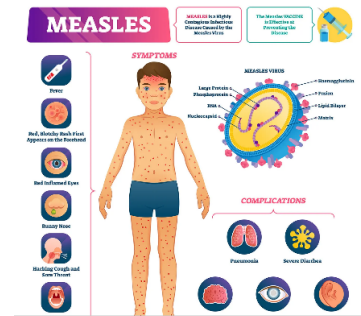
MEASLES

**Why in News**

- **Bangladesh launched emergency vaccination drive** targeting over one million children due to a measles outbreak.

**Virology and Transmission Dynamics**

- Measles is a highly contagious disease caused by a virus of the **Paramyxoviridae family**.
- It spreads through **airborne droplets and respiratory secretions** of infected individuals.
- The virus remains viable in air or on surfaces for up to **two hours**, enhancing transmission risk.



**Clinical Features and Disease Progression**

- Initial symptoms include **high fever (10–14 days post-exposure), cough, runny nose, and conjunctivitis**.
- **Koplik spots** (white lesions in cheeks) appear in early stages.
- A characteristic rash develops on **face and neck before spreading downward**.

**Vulnerable Groups and Health Risks**

- **Unvaccinated individuals** and those lacking immunity are highly susceptible.
- High-risk groups include **young children and pregnant women**, prone to severe complications.
- Complications include especially in malnourished populations.

**Prevention Strategy and Governance Dimensions**

- No specific antiviral treatment exists.
- Prevention is ensured through **Measles-Rubella (MR) Vaccine**, providing long-term immunity.
- Strengthening surveillance and vaccination coverage is crucial for **WHO measles elimination goals**.

## UTTAR PRADESH IN NEWS

### FARMER REGISTRY IN UTTAR PRADESH

 News On AIR

#### Uttar Pradesh govt launches special campaign to prepare Farmer Registry



The Uttar Pradesh government has launched a special campaign to prepare the Farmer Registry in the state. The drive aims to ensure that...

#### Why in News

- **UP CM Yogi Adityanath** directed linking **Farmer Registry with all agriculture schemes** for efficient benefit delivery.

#### Benefits of farmers registry

- It creates a **centralised farmer database** for targeted and transparent welfare delivery.
- Ensures better coordination among **Agriculture and Revenue Departments**.
- Linked with **procurement (wheat, pulses, oilseeds)** and input support schemes.
- Enables **Direct Benefit Transfer (DBT)** under schemes like **PM-KISAN and PMFBY**.
- Covers **all farmers irrespective of landholding size**.
- Registration through **Gram Panchayat camps** in campaign mode.
- Supports **Digital Agriculture (AgriStack, farmer ID system)**.
- Requires focus on **data accuracy, awareness, and grievance redressal**.

**SPECIAL CAMPAIGN FOR FARMER REGISTRY IN UTTAR PRADESH**

- Statewide campaign underway till **April 15 at Gram Sachivalayas**
- On-the-spot registration** and correction of farmer details
- Ensuring direct access to **PM-Kisan** and other **scheme benefits**
- Participation of **Gram Pradhan, Panchayat Sachiv and Lekhpals**
- Over 1.72 crore** farmers already integrated into the registry

*AI GENERATED*