



Sanskritii IAS



**DAILY
CURRENT AFFAIRS**

Important Current News for UPSC & UPPSC

9th April 2026

TOPICS:-

- 1. Production Linked Incentive Scheme for Food Processing Industry (PLISFPI)**
- 2. Sanderling (*Calidris alba*)**
- 3. Umred–Pauni–Karhandla Wildlife Sanctuary**
- 4. Pradhan Mantri Mudra Yojana (PMMY)**
- 5. Telecom Regulatory Authority of India (TRAI)**
- 6. Poshan Pakhwada**
- 7. Other Important News of the day**
- 8. Uttar Pradesh in News**

DELHI CENTRE:
636, Mukherjee Nagar
New Delhi-110009

PRAYAGRAJ CENTRE:
1/1/8A, Stanley Rd,
Maharana Pratap Chauraha,
Civil Lines, Prayagraj, UP - 211002

☎ 9555-124-124
🌐 sanskritiiias.com

PRODUCTION LINKED INCENTIVE SCHEME FOR FOOD PROCESSING INDUSTRY (PLISFPI)

 News On AIR

export sales of PLI products increased by 7.41%: Joint Secretary of MoFPI, D Praveen | DD News On Air



The Production Linked Incentive Scheme for the Food Processing Industry (PLISFPI) has shown encouraging results, with cumulative investment...

Why in News

- The scheme has achieved cumulative investment exceeding **₹9,000 crore** against committed **₹7,000 crore**, indicating strong industry response.

Policy Design and Institutional Framework

- The scheme is implemented by the **Ministry of Food Processing Industries (MoFPI)** to boost sectoral competitiveness.
- It operates for six years from **FY 2021–22 to FY 2026–27** with an outlay of **₹10,900 crore**.
- It targets firms meeting minimum sales and investment thresholds to ensure efficiency and scale.

Sectoral Focus and Incentive Structure

- It incentivises production in **RTC/RTE foods, processed fruits and vegetables, marine products, and mozzarella cheese**.
- It promotes **innovative and organic products of SMEs** to diversify product portfolios.
- It supports **branding and marketing abroad** through incentives for shelf space and global outreach.

Economic and Agricultural benefits

- It enhances **value addition and processing capacity**, reducing post-harvest losses.
- It creates **off-farm employment opportunities**, particularly in rural areas.
- It ensures **remunerative prices to farmers** by strengthening agro-processing value chains.
- It aligns with **Atmanirbhar Bharat** and export-led growth strategies.

Significance

- It aims to create **global food manufacturing champions** and improve India's share in global food trade.

- Strengthening **cold chain infrastructure and logistics integration** is essential for long-term success.



PM FORMALISATION OF MICRO FOOD PROCESSING ENTERPRISES SCHEME (PMFME)

SALIENT FEATURES OF THE SCHEME

- Micro-enterprises to get **Credit-Linked Subsidy @35%** of the total project cost with ceiling of **Rs. 10 lakh** for upgradation of infrastructure and capacity addition
- SHGs to get **Seed Capital** for giving loans to members for working capital and small tools
- On site **Skill Training & Handholding**
- Special focus on **Women Entrepreneurs & Aspirational districts**.
- Transition from the **Unorganized sector to the Formal sector**



Helpline Number
+91 1302281089

SANDERLING (CALIDRIS ALBA)

DH Deccan Herald

Migratory bird: Tagged Sanderling spotted in Andaman after 7,500 km trip

Sanderling sighting: A tagged migratory bird from South Australia was spotted on Narcondam Island in Andaman after flying over 7400 km.



Why in News

- A tagged bird migrated over **7,400 km from South Australia to Narcondam Island (India)**.

Species Characteristics and Habitat

- The **Calidris alba** is a small **wading shorebird** with seasonal plumage variation.
- It inhabits **tidal flats, mudflats, lake shores, and coastal regions**.

Migration and Distribution Patterns

- It is a **long-distance migrant**, travelling **3,000–10,000 km annually**.
- It is distributed across **all continents except Antarctica**.

Ecological Role and Diet

- It feeds on **small invertebrates like crabs and molluscs**, maintaining coastal food chains.

Threats and Conservation Status

- It faces threats from **wetland loss, pollution, and pesticide contamination**.
- It is classified as **Least Concern under IUCN Red List**, but local threats persist.

UMRED–PAUNI–KARHANDLA WILDLIFE SANCTUARY

 The Live Nagpur

Rare Melanistic Spotted Deer Sighted at Umred–Pauni–Karhandla Wildlife Sanctuary



In a rare and fascinating sighting, a melanistic (black-colored) spotted deer, commonly known as a chital, has been spotted at the...

Why in News

- A rare **melanistic spotted deer (chital)** was recorded in the sanctuary.

Geographical and Administrative Features

- Located in **Maharashtra (Nagpur and Bhandara districts)** and established in **2013**.
- It covers an area of **189 sq km** and is bounded by **Wainganga River and Gose Khurd Dam**.
- It is connected to **Tadoba-Andhari Tiger Reserve**, enhancing landscape-level conservation.

Flora Composition

- Dominated by **teak (60%)**, along with bamboo, tendu, and mahua species.


Faunal Diversity and Conservation Value

- It hosts **tigers, gaur, wild dogs, flying squirrels, pangolins, and honey badgers**.
- It functions as an **important wildlife corridor** in central India.

Strategic Conservation Importance

- Connectivity with nearby reserves supports **genetic diversity and species dispersal**.

PRADHAN MANTRI MUDRA YOJANA (PMMY)

 Tribune India

Mudra scheme: Women hold 60% of loan accounts

A whopping 58 crore loans amounting to Rs 40.07 lakh crore were disbursed under the Pradhan Mantri Mudra Yojana (PMMY) as the initiative...



Why in News

- The scheme completed **11 years**, highlighting its role in financial inclusion.

Institutional Framework and Objectives

- Launched on **8 April 2015**, it supports **non-farm micro enterprises**.
- It operates through **MUDRA (Micro Units Development & Refinance Agency Ltd.)**.

Credit Structure and Categories

- Loans are categorised into **Shishu (≤₹50,000)**, **Kishor (₹50,000–₹5 lakh)**, **Tarun (₹5–10 lakh)**, **Tarun Plus (₹10–20 lakh)**.
- Loans are provided by **Commercial Banks, RRBs, MFIs, NBFCs, and Small Finance Banks**.

Economic and Social Impact

- It promotes **entrepreneurship, employment generation, and financial inclusion**.
- It supports **allied agricultural activities** like dairy, poultry, and beekeeping.

TELECOM REGULATORY AUTHORITY OF INDIA (TRAI)

 News On AIR

TRAI issues Draft Telecom Consumer Protection Regulation 2026

The Telecom Regulatory Authority of India (TRAI) has released the Draft Telecom Consumer Protection (Thirteenth Amendment) Regulation, 2026.



Why in News

- TRAI released the **Draft Telecom Consumer Protection (13th Amendment) Regulation, 2026**.

Legal and Institutional Framework

- Established under the **TRAI Act, 1997**, regulating telecom services in India.
- The **2000 amendment** created **TDSAT (Telecom Disputes Settlement and Appellate Tribunal)**.

Regulatory Functions and Scope

- It regulates **tariffs, QoS, interconnection, spectrum, and consumer protection**.
- It issues **recommendations, regulations, and directions** guiding telecom policy.

Organisational Structure

- It consists of a **Chairperson, two full-time members, and two part-time members**.

- Members are appointed by the **Central Government** with tenure up to **3 years or 65 years of age**.

Governance Significance

- It ensures **fair competition and consumer rights**, critical for digital economy expansion.

POSHAN PAKHWADA

 News On AIR

8th Poshan Pakhwada 2026 will be observed from tomorrow across the country

The Women and Child Development Ministry will commemorate the 8th edition of Poshan Pakhwada – 2026 from tomorrow across the country.

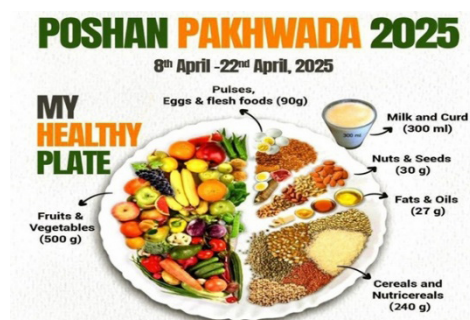


Why in News

- The **8th edition (April 9–23, 2026)** is being observed nationwide.

Policy Framework and Objectives

- Conducted by the **Ministry of Women and Child Development** to promote nutrition awareness.
- It supports **POSHAN Abhiyaan** through Jan Andolan approach.



Thematic Focus Areas (2026)

- The theme is **“Maximizing Brain Development in the First Six Years of Life”**.
- Focus includes **maternal nutrition, breastfeeding, complementary feeding, and early stimulation**.
- It emphasises **play-based learning and reduction of screen time** among children.

Governance and Social Dimensions

- It promotes **community participation and Anganwadi strengthening through CSR**.

OTHER IMPORTANT NEWS OF THE DAY

Places In News

ANGOLA

Why in News

- Angola is emerging as an **alternative gas supplier to India**, reducing dependence on West Asia.

Geographical and Political Features

- Located on the **southwestern coast of Africa** with capital **Luanda**.
- It borders **DR Congo, Zambia, Namibia, and Republic of Congo**.

Physical Geography and Climate

- It has a **tropical climate** influenced by the **Benguela Current**.
- Major rivers include **Cuanza and Cuango**, important for hydropower.

Natural Resources and Economic Importance

- Rich in **petroleum, diamonds, gold, uranium, and iron ore**.

Strategic Relevance for India

- Diversifies **India's energy security and import basket**.
- Enhances **South-South cooperation and Africa outreach policy**.



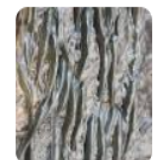
Environment

SHELLEAR FISH (PARAKNERIA THYSI)

Reuters

Thousands of small fish defy gravity to climb Congo waterfall

A species of small fish has been observed by the thousands climbing a vertical waterfall 15 metres (50 feet) tall in the Democratic Republic...



Context:

- Scientists observed it climbing **15-metre vertical waterfalls** in the **Democratic Republic of Congo**, indicating extreme ecological adaptation.

Habitat:

- Found in the **upper Congo Basin**.
- Located in **Luvilombo Falls on the Luvilombo River**.
- It is a **freshwater benthopelagic species**.

Characteristics:

- Small-sized fish measuring **37–48 mm**, growing up to **96 mm**.
- Possesses **hook-like projections on pectoral and pelvic fins**.
- Has **hypertrophied muscles** aiding strong grip and movement.

Behaviour:

- Capable of **climbing vertical waterfalls** against strong currents.
- Moves upstream to **avoid predators and reduce competition**.

Threats:

- **Illegal fishing using fine-mesh mosquito nets** leads to mass capture.
- **Water extraction for irrigation** reduces river flow and habitat stability.

Significance:

- Demonstrates **unique evolutionary adaptation in extreme environments**.
- Important for studies in **biodiversity, biomechanics, and ecological resilience**.

OAK TREE (GENUS: QUERCUS)

The Indian Express

<https://indianexpress.com> › Explained**Uttarakhand HC stays felling of oak trees in Mussoorie**

2 days ago — Oak belongs to the genus **Quercus** in the Fagaceae family and holds immense social and ecological importance in the Indian Himalayan regions. [Read more](#)

Context:

- The **Uttarakhand High Court** stayed felling of oak trees in **Mussoorie**, highlighting ecological concerns.



Habitat:

- Found globally across **North America, Europe, Asia, and Africa.**
- In India, present in **Himalayan region (800–3000 m altitude).**

Characteristics:

- Belongs to **genus Quercus under family Fagaceae.**
- Around **35 species in Indian Himalayas.**
- Common species include **Banj, Moru, Kharsu, Rianj, and Phaliath oak.**

Climatic Requirements:

- Thrives in **temperate climate with cold winters and warm summers.**
- Requires **well-drained soils** like sandy, loamy, and clayey types.

Ecological Role:

- Supports **soil conservation, water retention, and biodiversity.**
- Enhances **spring recharge and watershed protection.** Hosts **lichens, bryophytes, and pteridophytes.**

Significance:

- Critical for **Himalayan ecosystem stability and local livelihoods.**
- Highlights need for **sustainable forest governance and conservation measures.**

Defence

INS SUNAYNA

DD News

[INS Sunayna reaches Male, reinforces India-Maldives maritime cooperation](#)

Indian Navy's offshore patrol vessel INS Sunayna arrived in Male on Monday as part of its deployment under the Indian Ocean Ship (IOS) SAGAR...



Why in News

- It reached **Malé under SAGAR (Security and Growth for All in the Region)** initiative.



Technical and Operational Features

- It is a **Saryu-class offshore patrol vessel** built by **Goa Shipyard Limited**.
- Commissioned in **2013**, it operates under **Southern Naval Command**.

Capabilities and Strategic Role

- It performs **patrolling, surveillance, escort duties, and SLOC monitoring**.
- It has **diesel propulsion with speeds exceeding 25 knots** and advanced navigation systems.

Maritime Security Significance

- It strengthens India's role in **Indian Ocean Region (IOR) security architecture**.
- It supports **maritime diplomacy and regional stability under SAGAR doctrine**.

UTTAR PRADESH IN NEWS

GREATER AGRA TOWNSHIP PROJECT

U.P. CM launches projects in Agra worth ₹6,466 crore, says 'Greater Agra' township to come up

The township would be developed by the Agra Development Authority under the State's 'New City Promotion Scheme' at an estimated cost of around ₹5,142 crore

Published - April 08, 2026 10:48 am IST

Why in News:

- The **Uttar Pradesh Chief Minister** launched **325 projects worth ₹6,466 crore** in Agra and announced the **Greater Agra township**.

Project Features:

- Developed by **Agra Development Authority (ADA)** under **New City Promotion Scheme**.
- Estimated cost: **₹5,142 crore over 449.65 hectares**.
- Approved by **RERA (Real Estate Regulatory Authority)**.
- Will provide **multi-storey housing, plots, roads, sewerage, green spaces**.
- Planned to accommodate **over 10,000 families**.

Urban and Economic Significance:

- Aims to transform Agra into a **major urban and economic hub**.
- Envisioned as **“Second Noida”** to attract **investment and industries**.
- Promotes **employment generation and planned urbanisation**.

Other Infrastructure projects:

- Complemented by projects like **Agra Metro expansion**.
- Focus on **Agra airport development and new civil terminal**.
- Potential **rubber dam project in Fatehpur Sikri** for water management.