

# SANSKRITI IAS DAILY CURRENT AFFAIRS

16-06-2026

## 2-Bromo-4-Methylpropiophenone

III The Hindu

### 2-Bromo-4-Methylpropiophenone notified as 'controlled' substance under NDPS Act

The Department of Revenue has notified 2-Bromo-4-Methylpropiophenone, the main precursor chemical used by criminals to illegally manufacture...



**Why in News:** The Department of Revenue has notified 2-Bromo-4-Methylpropiophenone as a controlled substance under the **NDPS (Regulation of Controlled Substances) Order, 2013**.

### Chemical Profile

- It is an organic compound belonging to the **aromatic ketone** category.
- It is the primary precursor for manufacturing **Mephedrone (4-Methylmethcathinone)**.
- Mephedrone is a synthetic stimulant and psychotropic substance.

### Physical Properties

- It appears as a white or off-white crystalline powder.
- It is sparingly soluble in water.
- It dissolves easily in ethanol, acetone and chloroform.

### Industrial Applications

- It is used in pharmaceuticals, agrochemicals and fine chemicals.
- It is a precursor for analgesics, sedatives and anticonvulsants.
- It exhibits antimicrobial and anti-inflammatory properties.

### Legal Framework

- A controlled substance is a chemical whose production and use are regulated by the government.
- It falls under the **NDPS Act, 1985** and **Schedule A of NDPS (Regulation of Controlled Substances) Order, 2013**.

## Drop Shipping

**Why in News:** The global success of e-commerce platforms has highlighted the growing relevance of the drop shipping model.

### Business Model

- Drop shipping is a retail model without inventory ownership.
- Sellers receive orders and purchase products from suppliers.
- Suppliers directly ship products to customers.

### Advantages

- It eliminates warehousing and inventory costs.
- It requires relatively low capital investment.
- It is attractive for small businesses and entrepreneurs.



### Working Mechanism

- Customers place orders through online platforms.
- The seller forwards the order to suppliers.
- Suppliers dispatch the products directly.

### Limitations

- Sellers have limited control over product quality.
- Profit margins may be relatively low.
- Delays from suppliers may affect customer satisfaction.

## New GI Tags of Jharkhand

**TNIE** The New Indian Express

[Jharkhand's Bhagaiya silk, Kuchai silk, Munda jewellery and bamboo craft receive GI tag](#)

Experts believe the recognition will ensure that economic benefits from these traditional products reach the communities that have preserved...



**Why in News:** Four products from Jharkhand recently received Geographical Indication (GI) tags.

Products Awarded GI Tags

- Bhagaiya Silk
- Kuchai Silk
- Munda Jewellery
- Jharkhand Bamboo Craft

<p><b>Bhagaiya Silk</b></p> <ul style="list-style-type: none"> <li>• It is a hand-spun silk woven mainly by <b>Santhal tribal women</b>.</li> <li>• It represents indigenous knowledge systems.</li> </ul>	<p><b>Kuchai Silk</b></p> <ul style="list-style-type: none"> <li>• It is produced from <b>Tussar silkworms</b>.</li> <li>• It is cultivated on Asan and Arjun trees.</li> <li>• It originated in Seraikela-Kharsawan district.</li> </ul>	<p><b>Munda Jewellery and Bamboo Craft</b></p> <ul style="list-style-type: none"> <li>• Munda jewellery reflects the heritage of the <b>Munda tribe</b>.</li> <li>• Bamboo craft utilises locally available bamboo resources.</li> </ul>
------------------------------------------------------------------------------------------------------------------------------------------------------------------------------------------------------------	-------------------------------------------------------------------------------------------------------------------------------------------------------------------------------------------------------------------------------------------	------------------------------------------------------------------------------------------------------------------------------------------------------------------------------------------------------------------------------------------

### Long Range Land Attack Cruise Missile (LRLACM)

THE Hindu

[Flight-test of indigenous, long-range land attack cruise missile successful](#)

The Defence Research and Development Organisation (DRDO) on Monday (June 15, 2026) successfully conducted the flight-test of the Long Range...



**Why in News:** DRDO successfully tested the Long Range Land Attack Cruise Missile (LRLACM) from Dr APJ Abdul Kalam Island, Odisha.

#### Missile Profile

- It is a subsonic, surface-launched cruise missile.
- It is designed for precision strikes against land targets.
- It is developed by Aeronautical Development Establishment (ADE), Bengaluru.

#### Technical Features

- It has a strike range approaching 1,000 km.

- It carries a **450 kg warhead**.
- It uses a **Small Turbofan Engine (Manik)**.
- It employs satellite-assisted navigation systems.

### Strategic Importance

- It performs low-altitude terrain-hugging flights.
- It can target command centres, logistics hubs and radar stations.
- It strengthens India's long-range conventional strike capability.

## ILO Adopts First Global Treaty for Gig Economy Workers

**BW** BW People

### ILO Adopts First Global Treaty For Gig Workers

Landmark convention seeks to strengthen labour protections, fair pay and transparency across the platform economy.



**Why in News:** The **International Labour Organization (ILO)** adopted the **Decent Work in the Platform Economy Convention** during the **114th International Labour Conference** in Geneva.

### Historic International Development

- It is the first global treaty establishing binding labour standards for platform workers.
- The convention was adopted during the **114th International Labour Conference (ILC), 2026**.
- It addresses employment conditions in the rapidly expanding digital platform economy.

## Key Provisions

- It seeks to ensure **minimum wages, healthcare benefits, sick leave and social security coverage.**
- It applies to workers engaged through **digital labour platforms.**
- It covers workers in both the formal and informal sectors.
- The treaty becomes legally binding only after ratification by member countries.

### International Labour Organization (ILO)

- **Established:** 1919 under the **Treaty of Versailles**
- **Original Body:** Part of the **League of Nations**
- **UN Status:** Became the first specialized **UN agency in 1946**
- **Headquarters:** **Geneva, Switzerland**
- **Nobel Peace Prize:** Awarded in **1969**

## Important Data and Voting Outcome

- The convention was adopted with **406 votes in favour, 8 against and 36 abstentions.**
- According to the World Bank (2023), global app-based gig workers may reach 435 million.

## Other Important News of the day

### Persons in News

### Elon Musk Becomes World's First Trillionaire

TH The Hindu

#### [How history came to have its first trillionaire in Elon Musk](#)

The philosophy the SpaceX IPO stands for is trying to normalise the idea that what is true is only a function of who possesses the force...



**Why in News:** According to **Bloomberg**, **Elon Musk** briefly became the world's first trillionaire following the surge in **SpaceX** shares after its stock market debut.

#### Historic Milestone

- Elon Musk's net worth briefly reached approximately **USD 1.1 trillion.**
- His wealth increased by around **USD 188 billion** after the IPO.

- He became the first individual in history to cross the trillion-dollar mark.

### SpaceX IPO Developments

- **SpaceX** launched one of the largest Initial Public Offerings (IPOs) globally.
- The IPO raised approximately **USD 75 billion**.
- The company's market capitalization crossed **USD 2 trillion**.

### Economic Significance

- Musk's wealth exceeds the annual GDP of nearly 174 countries.
- Only about 21 countries have GDPs exceeding USD 1 trillion.
- The event highlights the growing concentration of wealth in technology sectors.

## Places in News

### San Andreas Fault

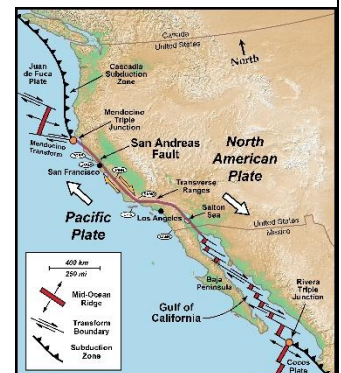
**Why in News:** Studies indicate that stress levels along the San Andreas Fault have reached their highest levels in 1,000 years.

#### Geographical Profile

- It is a major transform fault in western **North America**.
- It separates the **Pacific Plate** and **North American Plate**.
- It extends over **1,300 km** across California.

#### Geological Characteristics

- It is a **strike-slip fault**.



- The Pacific Plate moves northward relative to the North American Plate.
- It began forming around **30 million years ago**.

#### Significance

- It is among the world's most extensively studied faults.
- It is responsible for many powerful earthquakes.
- The movement contributed to the formation of the **Baja Peninsula**.

## Environment

### Hamataliwa mawlyngot

 The Meghalayan Express

#### [New spider species found hidden in Mawlyngot's hillsides](#)

ROOPAK GOSWAMI. Shillong, June 15: A tiny spider collected from a hillside shrub in Meghalaya's East Khasi Hills has been identified as a species new to...



**Why in News:** Researchers discovered a new species of spider, **Hamataliwa mawlyngot**, in Meghalaya's East Khasi Hills.

#### Species Profile

- It is a newly discovered species of **lynx spider**.
- It was found in **Mawlyngot village** of **East Khasi Hills, Meghalaya**.
- It marks the first record of the Hamataliwa genus in Meghalaya.

#### Ecological Characteristics

- It is an active predator and does not build webs.
- It relies on sharp vision and quick movements.
- It contributes to natural pest control in agricultural landscapes.

#### Biogeographical Importance

- The discovery bridges a distribution gap between India and Southeast Asia.
- Northeastern India remains poorly studied for spider diversity.

## Venus Flytrap

 The Guardian

[Scientists reveal surprising mechanism behind Venus flytrap's rapid snap](#)

Intricate tests show hair-trigger detection causes cells on outer surface of leaf to soften, prompting closure.



**Why in News:** Scientists have identified the physical mechanism behind the rapid snapping action of the Venus Flytrap.

### Plant Profile


- Scientific name is **Dionaea muscipula**.
- It is a perennial carnivorous plant belonging to the **Sundew family**.
- It is native to North Carolina and South Carolina, USA.

### Adaptation and Habitat

- It grows in moist, acidic and nutrient-poor soils.
- It supplements nutrition by digesting insects.

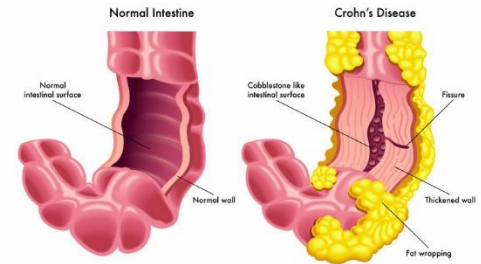
### Mechanism of Trap Closure

- It possesses two hinged lobes at the end of each leaf.
- Specialized hairs called **trichomes** trigger trap closure.
- Two touches within a short interval activate the mechanism.
- Trap closure may occur within **0.1 second**.
- This movement is called **thigmonasty**.

	<p><b>Recent Scientific Findings</b></p> <ul style="list-style-type: none"> <li>• Outer cell walls soften by <b>30-40%</b> during activation.</li> <li>• Release of internal stress causes rapid trap closure.</li> </ul>
<p><b>Science and Technology</b></p>	<p><b>Indocolea devendrae</b></p> <p><b>Why in News:</b> Researchers discovered a new bryophyte genus named <b>Indocolea devendrae</b> in northern Kerala.</p> <p><b>Species Profile</b></p> <ul style="list-style-type: none"> <li>• It is a newly discovered <b>bryophyte plant</b>.</li> <li>• It belongs to <b>liverworts</b>.</li> <li>• It was named after <b>Dr Devendra Kumar Singh</b> of BSI.</li> </ul> <p><b>Unique Characteristics</b></p> <ul style="list-style-type: none"> <li>• It grows on the mushroom <b>Phellinus fastuosus</b>.</li> <li>• It is an entirely new genus discovered in India.</li> </ul> <p><b>About Liverworts</b></p> <ul style="list-style-type: none"> <li>• Liverworts are non-vascular plants.</li> <li>• They lack true roots, stems and leaves.</li> <li>• They possess a flattened structure called a <b>thallus</b>.</li> <li>• They are among the oldest terrestrial plants, dating back <b>470 million years</b>.</li> </ul>
	
<p><b>Disease</b></p>	<p><b>Crohn's Disease</b></p> <p><b>Why in News:</b> A recent study mapped gene activity across more than 50 gut cell types in <b>Crohn's disease</b>.</p>

## Disease Profile

- It is a chronic **Inflammatory Bowel Disease (IBD)**.
- It causes inflammation in the digestive tract.
- It commonly affects the end of the small intestine.



## Causes and Risk Factors

- Genetics, abnormal immunity and microbiome alterations contribute.
- First-degree relatives have higher risk.
- It commonly develops in people aged 20–30 years.

## Symptoms

- **Diarrhoea, fever and fatigue** are common.
- Patients may experience abdominal pain and weight loss.
- Fistula formation may occur around the anus.

## Treatment

- There is no permanent cure.
- Treatment aims to reduce inflammation and control symptoms.
- Patients experience alternating phases of **flare and remission**.

## Defence

### Exercise Pitch Black 2026

The Hindu

#### IAF to participate in Exercise Pitch Black 2026 in Australia

The Indian Air Force (IAF) will participate in Exercise Pitch Black 2026, the Royal Australian Air Force's (RAAF) premier multinational air...



**Why in News:** India will participate in Exercise Pitch Black 2026 hosted by Australia from 20 July to 7 August 2026.

### Exercise Profile

- It is a **biennial multinational air exercise**.
- It is hosted by the **Royal Australian Air Force (RAAF)**.
- It is the RAAF's flagship international exercise.

### 2026 Edition

- It involves **19 countries**, over **100 aircraft** and **4,400 personnel**.
- It will be conducted at **Darwin, Tindal and Amberley** air bases.

### Operational Objectives

- It focuses on advanced aerial combat operations.
- It enhances interoperability among participating nations.
- It strengthens electronic warfare and network-centric operations.

### India's Participation

- The IAF earlier participated in **2018, 2022 and 2024** editions.
- India has deployed a multi-role task force for 2026.

## Uttar Pradesh in News

### Regional Meteorological Centre (RMC), Lucknow

 Newsonair

#### [Union Minister Jitendra Singh, UP CM Yogi Adityanath Launch Regional Meteorological Centre at Lucknow](#)

Union Minister of State for Science and Technology Dr Jitendra Singh today said that the progress achieved in weather forecasting and...



Why in News: Union Minister **Jitendra Singh** and Uttar Pradesh Chief Minister **Yogi Adityanath** inaugurated a new **Regional Meteorological**

**Centre (RMC)** in Lucknow to strengthen weather forecasting and disaster management in northern India.

### Institutional Significance

- The new **RMC at Lucknow** will strengthen regional weather monitoring and forecasting services.
- It will cater to **Uttar Pradesh, Uttarakhand and adjoining regions**.
- The centre will provide **localized and impact-based weather forecasts**.
- It will improve early warning dissemination during extreme weather events.

### India Meteorological Department (IMD)

- Established: 1875
- Administrative Ministry: Ministry of Earth Sciences (MoES)
- Headquarters: New Delhi
- Head: Director General of Meteorology
- Regional Meteorological Centres: Mumbai, Chennai, New Delhi, Kolkata, Nagpur, Guwahati and Jammu.

### Weather Infrastructure Expansion

- India's **Doppler Weather Radars (DWRs)** increased from 17 in 2014 to 50 operational radars.
- Around **50 additional Doppler Weather Radars** have been proposed.
- **Automatic Weather Stations (AWS)** in Uttar Pradesh increased from 59 to 107.
- **Automatic Rain Gauges (ARGs)** increased from 132 to 140.
- Lightning detection sensors increased from 0 to 7.

### Aviation and Disaster Management Relevance

- Weather-related aviation services are currently available at 11 airports in Uttar Pradesh.
- The centre will enhance disaster preparedness against floods, heatwaves and thunderstorms.
- It will improve sector-specific advisories for agriculture and transportation.